

Product datasheet for TP305544

SPATA18 (NM_145263) Human Recombinant Protein

Product data:

Product Type:	Recombinant Proteins
Description:	Recombinant protein of human spermatogenesis associated 18 homolog (rat) (SPATA18), 20 µg
Species:	Human
Expression Host:	HEK293T
Expression cDNA Clone or AA Sequence:	>RC205544 protein sequence Red=Cloning site Green=Tags(s)

MAENLKRLVSNETLRTLQEKLDFWLKEYNTNTCDQNLNHCLELIEQVAKVQGQLFGILTAAAQEGGRNDG
VETIKSRLLPWLEASFTAASLGKSVDSKVPQLQDTFDRERHKDPSRDRDMQQLDSNLNSTRSQCNOVQD
DLVETEKLEESKNRSAISLLAAEEEINQLKKQLKSLQAQEDARHRNTDQRSSENRRSEPWLEERKREQ
WNSLKQNADQQDTEAMSDYKKQLRNLKEEIAVLSAEKSALQGRSSRSRSPAPRRSRSCSRRSASPSTA
VKVRRPSPNRSKLSNVARKAALLSRFSDSYSQARLDAQCLLRRCIDKAETVQRIIYIATVEAFHVAKMAF
RHFKIHVRSKSLTPSYVGSNDFENAVLDYVICHLDLYDSQSSVNDVIRAMNVNPKISFPPVDFCLLSDFI
QEICCIAMQALEPPLDIAYGADGEVFNDCYRRSYDSDFTAPLVLYHWPALMENDCVIMKGEAVTRR
GAFWNSVRSVSRCSRSLSPICPRSQIGLNTMSRSRSPSPIRCGLPRF

TRTRPLEQKLISEEDLAANDILDYKDDDDKV

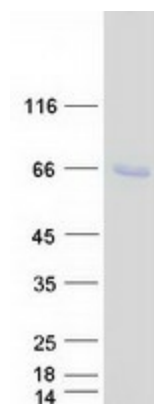
Tag:	C-Myc/DDK
Predicted MW:	60.9 kDa
Concentration:	>0.05 µg/µL as determined by microplate BCA method
Purity:	> 80% as determined by SDS-PAGE and Coomassie blue staining
Buffer:	25 mM Tris-HCl, 100 mM glycine, pH 7.3, 10% glycerol
Preparation:	Recombinant protein was captured through anti-DDK affinity column followed by conventional chromatography steps.
Note:	For testing in cell culture applications, please filter before use. Note that you may experience some loss of protein during the filtration process.
Storage:	Store at -80°C.



[View online »](#)

Stability:	Stable for 12 months from the date of receipt of the product under proper storage and handling conditions. Avoid repeated freeze-thaw cycles.
RefSeq:	NP_660306
Locus ID:	132671
UniProt ID:	Q8TC71 , A0A140VKF4
RefSeq Size:	4425
Cytogenetics:	4q12
RefSeq ORF:	1614
Synonyms:	Mieap; SPETEX1
Summary:	This gene encodes a p53-inducible protein that is able to induce lysosome-like organelles within mitochondria that eliminate oxidized mitochondrial proteins, thereby contributing to mitochondrial quality control. Dysregulation of mitochondrial quality control is associated with cancer and degenerative diseases. The encoded protein mediates accumulation of the lysosome-like mitochondrial organelles through interaction with B cell lymphoma 2 interacting protein 3 and B cell lymphoma 2 interacting protein 3 like at the outer mitochondrial membrane, which allows translocation of lysosomal proteins to the mitochondrial matrix from the cytosol. Alternative splicing results in multiple transcript variants. [provided by RefSeq, Sep 2016]

Product images:



Coomassie blue staining of purified SPATA18 protein (Cat# TP305544). The protein was produced from HEK293T cells transfected with SPATA18 cDNA clone (Cat# [RC205544]) using MegaTran 2.0 (Cat# [TT210002]).