

Product datasheet for **TP305543M**

AKAP associated Sperm Protein (ROPN1L) (NM_031916) Human Recombinant Protein

Product data:

Product Type: Recombinant Proteins

Description: Recombinant protein of human ropporin 1-like (ROPN1L), 100 µg

Species: Human

Expression Host: HEK293T

Expression cDNA Clone or AA Sequence: >RC205543 protein sequence
Red=Cloning site Green=Tags(s)

MPLPDTMFCAQQIHIPPELPDILKQFTKAAIRTQPADVLRWSAGYFSALSRGDPLPVKDRMEMPTATQKT
DTGLTQGLLKVLHKQCHHKRYVELTDLEQKWKNLCLPKEKFKALLQLDPCENKIKWINFLALGCSMLGGS
LNTALKHLCEILTDDREGGPARIPFKTFSYVYRYLARLDSVSPLETESYLASLKENIDARKNGMIGLSD
FFFPKRKLLSEIENSEDVGH

TRTRPLEQKLISEEDLAANDILDYKDDDDKV

Tag: C-Myc/DDK

Predicted MW: 25.9 kDa

Concentration: >0.05 µg/µL as determined by microplate BCA method

Purity: > 80% as determined by SDS-PAGE and Coomassie blue staining

Buffer: 25 mM Tris-HCl, 100 mM glycine, pH 7.3, 10% glycerol

Preparation: Recombinant protein was captured through anti-DDK affinity column followed by conventional chromatography steps.

Note: For testing in cell culture applications, please filter before use. Note that you may experience some loss of protein during the filtration process.

Storage: Store at -80°C.

Stability: Stable for 12 months from the date of receipt of the product under proper storage and handling conditions. Avoid repeated freeze-thaw cycles.

RefSeq: [NP_114122](#)

Locus ID: 83853

UniProt ID: [Q96C74](#)



[View online »](#)

RefSeq Size: 1093

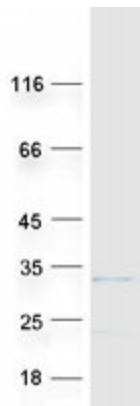
Cytogenetics: 5p15.2

RefSeq ORF: 690

Synonyms: ASP; RSPH11

Summary: This gene encodes a member of the ropporin family. The encoded protein is present in sperm and interacts with A-kinase anchoring protein, AKAP3, through the amphipathic helix region of AKAP3. Alternatively spliced transcript variants have been found for this gene. [provided by RefSeq, Oct 2014]

Product images:



Coomassie blue staining of purified ROPN1L protein (Cat# [TP305543]). The protein was produced from HEK293T cells transfected with ROPN1L cDNA clone (Cat# [RC205543]) using MegaTran 2.0 (Cat# [TT210002]).