

Product datasheet for **TP305542M**

C6orf57 (SDHAF4) (NM_145267) Human Recombinant Protein

Product data:

Product Type:	Recombinant Proteins
Description:	Recombinant protein of human chromosome 6 open reading frame 57 (C6orf57), 100 µg
Species:	Human
Expression Host:	HEK293T
Expression cDNA Clone or AA Sequence:	>RC205542 protein sequence Red =Cloning site Green =Tags(s)
	MTPSRLPWLLSWVSATAWRAARSPLLCHSLRKTSSSQGGKSELVKQSLKKPMLPEGRFDAPEDSHLEKEP LEKFPDDVNPVTKEKGGPRGPEPTRYGDWERKGRCIDF
	TRTRPLEQKLISEEDLAANDILDYKDDDDKV
Tag:	C-Myc/DDK
Predicted MW:	12 kDa
Concentration:	>0.05 µg/µL as determined by microplate BCA method
Purity:	> 80% as determined by SDS-PAGE and Coomassie blue staining
Buffer:	25 mM Tris-HCl, 100 mM glycine, pH 7.3, 10% glycerol
Preparation:	Recombinant protein was captured through anti-DDK affinity column followed by conventional chromatography steps.
Note:	For testing in cell culture applications, please filter before use. Note that you may experience some loss of protein during the filtration process.
Storage:	Store at -80°C.
Stability:	Stable for 12 months from the date of receipt of the product under proper storage and handling conditions. Avoid repeated freeze-thaw cycles.
RefSeq:	NP_660310
Locus ID:	135154
UniProt ID:	Q5VUM1
RefSeq Size:	526
Cytogenetics:	6q13



[View online »](#)

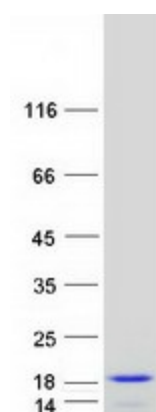
RefSeq ORF: 324

Synonyms: C6orf57; Sdh8

Summary: Plays an essential role in the assembly of succinate dehydrogenase (SDH), an enzyme complex (also referred to as respiratory complex II) that is a component of both the tricarboxylic acid (TCA) cycle and the mitochondrial electron transport chain, and which couples the oxidation of succinate to fumarate with the reduction of ubiquinone (coenzyme Q) to ubiquinol (PubMed:24954416). Binds to the flavoprotein subunit SDHA in its FAD-bound form, blocking the generation of excess reactive oxygen species (ROS) and facilitating its assembly with the iron-sulfur protein subunit SDHB into the SDH catalytic dimer (By similarity).[UniProtKB/Swiss-Prot Function]

Protein Families: Secreted Protein

Product images:



Coomassie blue staining of purified SDHAF4 protein (Cat# [TP305542]). The protein was produced from HEK293T cells transfected with SDHAF4 cDNA clone (Cat# [RC205542]) using MegaTran 2.0 (Cat# [TT210002]).