

Product datasheet for **TP305540**

HSDL1 (NM_031463) Human Recombinant Protein

Product data:

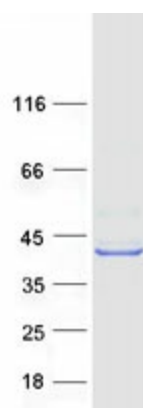
| | |
|---------------------------------------|--|
| Product Type: | Recombinant Proteins |
| Description: | Recombinant protein of human hydroxysteroid dehydrogenase like 1 (HSDL1), 20 µg |
| Species: | Human |
| Expression Host: | HEK293T |
| Expression cDNA Clone or AA Sequence: | >RC205540 protein sequence Red =Cloning site Green =Tags(s) |
| | <p>MAAVDSFYLLYREIARSCNCYMEALALVGAWYTARKSITVICDFYSLIRLHFIPRLGSRADLIKQYGRWA VSGATDGIGKAYAEELASRGLNIIILISRNEEKLVVAKDIADTYKVETDIIVADFSSGREIYLPREAL KDKDVGILVNNVGVFYPYPQYFTQLSEDKLWDIINVNIAAASLMVHVLPGMVERKKGAIVTISSGSCCK PTPQLAAFSASKAYLDHFSRALQYEQYASKGIFVQSLIPFYVAASMTAPSNFLHRCSWLVPSPKVYAHHAV STLGISKRTTGYWSHSIQFLFAQYMPPEWLWWGANILNRSRKEALSCTA</p> <p>TRTRPLEQKLISEEDLAANDILDYKDDDDKV</p> |
| Tag: | C-Myc/DDK |
| Predicted MW: | 36.8 kDa |
| Concentration: | >0.05 µg/µL as determined by microplate BCA method |
| Purity: | > 80% as determined by SDS-PAGE and Coomassie blue staining |
| Buffer: | 25 mM Tris-HCl, 100 mM glycine, pH 7.3, 10% glycerol |
| Preparation: | Recombinant protein was captured through anti-DDK affinity column followed by conventional chromatography steps. |
| Note: | For testing in cell culture applications, please filter before use. Note that you may experience some loss of protein during the filtration process. |
| Storage: | Store at -80°C. |
| Stability: | Stable for 12 months from the date of receipt of the product under proper storage and handling conditions. Avoid repeated freeze-thaw cycles. |
| RefSeq: | NP_113651 |
| Locus ID: | 83693 |



[View online »](#)

| | |
|-------------------|---|
| UniProt ID: | Q3SXM5 , I6L975 |
| RefSeq Size: | 3668 |
| Cytogenetics: | 16q24.1 |
| RefSeq ORF: | 990 |
| Synonyms: | SDR12C3 |
| Protein Families: | Druggable Genome |

Product images:



Coomassie blue staining of purified HSDL1 protein (Cat# TP305540). The protein was produced from HEK293T cells transfected with HSDL1 cDNA clone (Cat# [RC205540]) using MegaTran 2.0 (Cat# [TT210002]).