

## Product datasheet for TP305536L

### SLC35G2 (NM\_025246) Human Recombinant Protein

#### Product data:

Product Type:	Recombinant Proteins
Description:	Recombinant protein of human transmembrane protein 22 (TMEM22), transcript variant 1, 1 mg
Species:	Human
Expression Host:	HEK293T
Expression cDNA Clone or AA Sequence:	>RC205536 protein sequence <b>Red</b> =Cloning site <b>Green</b> =Tags(s)

MDTSPSRKYPVKKRVKIHPNTVMVKYTSYHPQPGDDGYEEINEGYGNFMEENPKKGLLSEMKKKGRAFFG  
TMDTLPPPTEDPMINEIGQFQSFSAEKNIFQSRKMWIVLFGSALAHGCVALITRLVSDRSKVPSLELIFIR  
SVFQVLSVLVVCYEEAPFGPSGYRLRLFFYGVCNVISITCAYTSFSIVPPSNGTTMWRATTTVFSAILA  
FLLVDEKMAYVDMATVVCILGVCLVMIPNIVDEDNSLLNAWKEAFGYTMTVMAGLTTALSMIVYRSIKE  
KISMWTALFTFGWTGTIWGISTMFIHQEPIIPLDGETWSYLIAICVCSTAAFLGVYYALDKFHPALVSTV  
QHLEIVVAMVLQLLVLHIFPSIYDVFVGGVIIMISVFLVLAGYKLYWRNLRRQDYQEILDSPK

**TRTRPLEQKLISEEDLAANDILDYKDDDDKV**

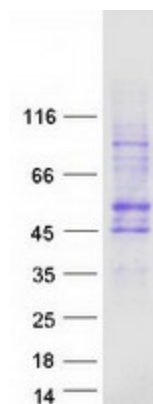
Tag:	C-Myc/DDK
Predicted MW:	46.2 kDa
Concentration:	>0.05 µg/µL as determined by microplate BCA method
Purity:	> 80% as determined by SDS-PAGE and Coomassie blue staining
Buffer:	25 mM Tris-HCl, 100 mM glycine, pH 7.3, 10% glycerol
Preparation:	Recombinant protein was captured through anti-DDK affinity column followed by conventional chromatography steps.
Note:	For testing in cell culture applications, please filter before use. Note that you may experience some loss of protein during the filtration process.
Storage:	Store at -80°C.
Stability:	Stable for 12 months from the date of receipt of the product under proper storage and handling conditions. Avoid repeated freeze-thaw cycles.
RefSeq:	<u><a href="#">NP_079522</a></u>



[View online »](#)

Locus ID:	80723
UniProt ID:	<a href="#">Q8TBE7</a>
RefSeq Size:	2079
Cytogenetics:	3q22.3
RefSeq ORF:	1236
Synonyms:	TMEM22
Summary:	May play a role in cell proliferation.[UniProtKB/Swiss-Prot Function]
Protein Families:	Transmembrane

### Product images:



Coomassie blue staining of purified SLC35G2 protein (Cat# [TP305536]). The protein was produced from HEK293T cells transfected with SLC35G2 cDNA clone (Cat# [RC205536]) using MegaTran 2.0 (Cat# [TT210002]).