

## Product datasheet for TP305536

### SLC35G2 (NM\_025246) Human Recombinant Protein

#### Product data:

|                                       |   |
|---------------------------------------|---|
| Product Type:                         | Recombinant Proteins  |
| Description:                          | Recombinant protein of human transmembrane protein 22 (TMEM22), transcript variant 1, 20 µg |
| Species:                              | Human   |
| Expression Host:                      | HEK293T   |
| Expression cDNA Clone or AA Sequence: | >RC205536 protein sequence<br><b>Red</b> =Cloning site <b>Green</b> =Tags(s)                |

MDTSPSRKYPVKKRVKIHNPNTVMVKYTSHPYQPGDDGYEEINEGYGNFMEENPKKGLLSEMKKKGRAFF  
G

TMDTLPPPTEDPMINEIGQFQSFAEKNIFQSRKMWVLFGSALAHGCVALITRLVSDRSKVPSELELIFIR  
SVFQVLSVLVVCYEEAPFGPSGYRLRLFFYGVCNVISITCAYTSFSIVPPSNGTTMWRATTTVFSAILA  
FLLVDEKMAYVDMATVCSILGVCLVMIPNIVDEDNSLLNAWKEAFGYTMTVMAGLTTALSMIVYRSIKE  
KISMWTALFTFGWTGTIWGISTMFILQEPIIPLDGETWSYLIAICVCSTAAFLGVVYALDKFHPALVSTV  
QHLEIVVAMVLQLLVLFHIFPSIYDVFGGVIMISVFLAGYKLYWRNLRRQDYQEILDSPK

**TRTRPLEQKLISEEDLAANDILDYKDDDDKV**

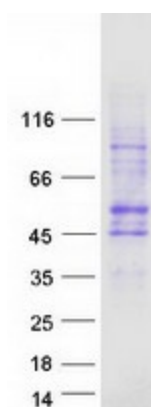
|                |  |
|----------------|--|
| Tag:           | C-Myc/DDK  |
| Predicted MW:  | 46.2 kDa   |
| Concentration: | >0.05 µg/µL as determined by microplate BCA method   |
| Purity:        | > 80% as determined by SDS-PAGE and Coomassie blue staining  |
| Buffer:        | 25 mM Tris-HCl, 100 mM glycine, pH 7.3, 10% glycerol   |
| Preparation:   | Recombinant protein was captured through anti-DDK affinity column followed by conventional chromatography steps.                                     |
| Note:          | For testing in cell culture applications, please filter before use. Note that you may experience some loss of protein during the filtration process. |
| Storage:       | Store at -80°C.  |
| Stability:     | Stable for 12 months from the date of receipt of the product under proper storage and handling conditions. Avoid repeated freeze-thaw cycles.        |



[View online »](#)

|                   |   |
|-------------------|---|
| RefSeq:           | <a href="#">NP_079522</a>   |
| Locus ID:         | 80723   |
| UniProt ID:       | <a href="#">Q8TBE7</a>  |
| RefSeq Size:      | 2079  |
| Cytogenetics:     | 3q22.3  |
| RefSeq ORF:       | 1236  |
| Synonyms:         | TMEM22  |
| Summary:          | May play a role in cell proliferation.[UniProtKB/Swiss-Prot Function] |
| Protein Families: | Transmembrane   |

### Product images:



Coomassie blue staining of purified SLC35G2 protein (Cat# TP305536). The protein was produced from HEK293T cells transfected with SLC35G2 cDNA clone (Cat# [RC205536]) using MegaTran 2.0 (Cat# [TT210002]).