

Product datasheet for **TP305535M**

RND1 (NM_014470) Human Recombinant Protein

Product data:

Product Type: Recombinant Proteins

Description: Recombinant protein of human Rho family GTPase 1 (RND1), 100 µg

Species: Human

Expression Host: HEK293T

**Expression cDNA Clone
or AA Sequence:** >RC205535 protein sequence
Red=Cloning site **Green**=Tags(s)

MKERRAPQPVVARCKLVLVGDVQCGKTAMLQVLAKDCYPETYVPTVFENYTACLEEEQRVELSLWDTSG
SPYYDNVRPLCYSDSDAVLLCFDISRPETVDSALKKWRTEILDYCPSTRVLLIGCKTDLRTDLSTLMELS
HQQQAPISYEQGCAIAKQLGAEIYLEGSAFTSEKSIHSIFRTASMLCLNKPSPLPQKSPVRSLSKRLLHL
PSRSELISSTFKKEKAKSCSIM

TRTRPLEQKLISEEDLAANDILDYKDDDDKV

Tag: C-Myc/DDK

Predicted MW: 25.9 kDa

Concentration: >0.05 µg/µL as determined by microplate BCA method

Purity: > 80% as determined by SDS-PAGE and Coomassie blue staining

Buffer: 25 mM Tris-HCl, 100 mM glycine, pH 7.3, 10% glycerol

Preparation: Recombinant protein was captured through anti-DDK affinity column followed by conventional chromatography steps.

Note: For testing in cell culture applications, please filter before use. Note that you may experience some loss of protein during the filtration process.

Storage: Store at -80°C.

Stability: Stable for 12 months from the date of receipt of the product under proper storage and handling conditions. Avoid repeated freeze-thaw cycles.

RefSeq: [NP_055285](#)

Locus ID: 27289

UniProt ID: [Q92730](#)



[View online »](#)

RefSeq Size: 1665

Cytogenetics: 12q13.12

RefSeq ORF: 696

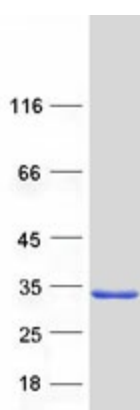
Synonyms: ARHS; RHO6; RHOS

Summary: This gene encodes a protein that belongs to the Rho GTPase family. Members of this family regulate the organization of the actin cytoskeleton in response to extracellular growth factors. A similar protein in rat interacts with a microtubule regulator to control axon extension. [provided by RefSeq, Apr 2014]

Protein Families: Stem cell - Pluripotency

Protein Pathways: Axon guidance

Product images:



Coomassie blue staining of purified RND1 protein (Cat# [TP305535]). The protein was produced from HEK293T cells transfected with RND1 cDNA clone (Cat# [RC205535]) using MegaTran 2.0 (Cat# [TT210002]).