

Product datasheet for **TP305535L**

RND1 (NM_014470) Human Recombinant Protein

Product data:

Product Type:	Recombinant Proteins
Description:	Recombinant protein of human Rho family GTPase 1 (RND1), 1 mg
Species:	Human
Expression Host:	HEK293T
Expression cDNA Clone or AA Sequence:	>RC205535 protein sequence Red =Cloning site Green =Tags(s)
	 MKERRAPQPVARCKLVLVGDVQCGKTAMLQVLAKDCYPETYVPTVFENYTACLEEEQRVELSLWDTSG SPYYDNVRPLCYSDSDAVLLCFDISRPETVDSALKKWRTEILDYCPSTRVLLIGCKTDLRTDLSTLMELS HQQQAPISYEQGCAIAKQLGAEIYLEGSAFTSEKSIHSIFRTASMLCLNKPSPLPQKSPVRSLSKRLLHL PSRSELISSTFKKEKAKSCSIM TRTRPLEQKLISEEDLAANDILDYKDDDDKV
Tag:	C-Myc/DDK
Predicted MW:	25.9 kDa
Concentration:	>0.05 µg/µL as determined by microplate BCA method
Purity:	> 80% as determined by SDS-PAGE and Coomassie blue staining
Buffer:	25 mM Tris-HCl, 100 mM glycine, pH 7.3, 10% glycerol
Preparation:	Recombinant protein was captured through anti-DDK affinity column followed by conventional chromatography steps.
Note:	For testing in cell culture applications, please filter before use. Note that you may experience some loss of protein during the filtration process.
Storage:	Store at -80°C.
Stability:	Stable for 12 months from the date of receipt of the product under proper storage and handling conditions. Avoid repeated freeze-thaw cycles.
RefSeq:	NP_055285
Locus ID:	27289
UniProt ID:	Q92730



[View online »](#)

RefSeq Size: 1665

Cytogenetics: 12q13.12

RefSeq ORF: 696

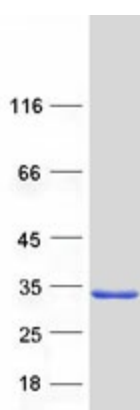
Synonyms: ARHS; RHO6; RHOS

Summary: This gene encodes a protein that belongs to the Rho GTPase family. Members of this family regulate the organization of the actin cytoskeleton in response to extracellular growth factors. A similar protein in rat interacts with a microtubule regulator to control axon extension. [provided by RefSeq, Apr 2014]

Protein Families: Stem cell - Pluripotency

Protein Pathways: Axon guidance

Product images:



Coomassie blue staining of purified RND1 protein (Cat# [TP305535]). The protein was produced from HEK293T cells transfected with RND1 cDNA clone (Cat# [RC205535]) using MegaTran 2.0 (Cat# [TT210002]).