

## Product datasheet for **TP305519**

### **C1orf19 (TSEN15) (NM\_052965) Human Recombinant Protein**

#### Product data:

Product Type:	Recombinant Proteins
Description:	Recombinant protein of human tRNA splicing endonuclease 15 homolog ( <i>S. cerevisiae</i> ) (TSEN15), transcript variant 1, 20 µg
Species:	Human
Expression Host:	HEK293T
Expression cDNA Clone or AA Sequence:	>RC205519 protein sequence <b>Red</b> =Cloning site <b>Green</b> =Tags(s)  MEERGDSEPTPGCSGLGPGGVRGFGDGGGAPSWAPEDAWMGTHPKYLEMMELDIGDATQVYVAFVLVLDL MESKSWHEVNCVGLPELQLICLVGTEIEGGLQTVVPTPITASLSHNRIREILKASRKLQGDPLPMSFT LAIVESDSTIVYYKLTDFMLPDPQNISLRR  <b>TRTRPLEQKLISEEDLAANDILDYKDDDDKV</b>
Tag:	C-Myc/DDK
Predicted MW:	18.5 kDa
Concentration:	>0.05 µg/µL as determined by microplate BCA method
Purity:	> 80% as determined by SDS-PAGE and Coomassie blue staining
Buffer:	25 mM Tris-HCl, 100 mM glycine, pH 7.3, 10% glycerol
Preparation:	Recombinant protein was captured through anti-DDK affinity column followed by conventional chromatography steps.
Note:	For testing in cell culture applications, please filter before use. Note that you may experience some loss of protein during the filtration process.
Storage:	Store at -80°C.
Stability:	Stable for 12 months from the date of receipt of the product under proper storage and handling conditions. Avoid repeated freeze-thaw cycles.
RefSeq:	<a href="#">NP_443197</a>
Locus ID:	116461
UniProt ID:	<a href="#">Q8WW01</a>



[View online »](#)

RefSeq Size: 1998

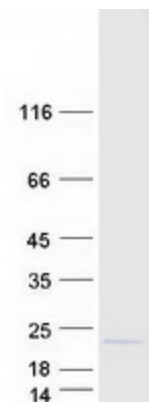
Cytogenetics: 1q25.3

RefSeq ORF: 513

Synonyms: C1orf19; PCH2F; sen15

**Summary:** This gene encodes a subunit of the tRNA splicing endonuclease, which catalyzes the removal of introns from tRNA precursors. Alternative splicing results in multiple transcript variants. There is a pseudogene of this gene on chromosome 17. [provided by RefSeq, Jul 2014]

### Product images:



Coomassie blue staining of purified TSEN15 protein (Cat# TP305519). The protein was produced from HEK293T cells transfected with TSEN15 cDNA clone (Cat# [RC205519]) using MegaTran 2.0 (Cat# [TT210002]).