

Product datasheet for **TP305515L**

ADAM32 (NM_145004) Human Recombinant Protein

Product data:

Product Type: Recombinant Proteins

Description: Recombinant protein of human ADAM metallopeptidase domain 32 (ADAM32), 1 mg

Species: Human

Expression Host: HEK293T

Expression cDNA Clone or AA Sequence: >RC205515 protein sequence
Red=Cloning site **Green**=Tags(s)

MFRLWLLLAGLCLLASRPGFQNSLLQIVPEKIQTNTNDSSEIEYEQISYIIPIDEKLYTVHLKQRYFL
ADNFMIYLYNQGSMTYSSDIQTQCYQGNIEGYPDMSVTLSTCSGLRGILQFENVSYGIEPLESAVEFQ
HVLYKLNEDNDIAIFIDRSLKEQPMDDNIFISEKSEPAVPDLFPLYLEMHIWVDKTLVDYWGSDSMIVT
NKVIEIVGLANSMFTQFKVTIVLSSLELWSDENKISTVGEADELLQKFLEWKQSYLNLRPHDIAYLLIYM
DYPRYLGAVFPGTMCITRYSAGVALYPKEITLEAFVAVITQMLALSLSISYDDPKKCQCSESTCIMNPEV
VQSNQVKTFFSSCLRSFQNFISNVGVKCLQNKPMQKSPKPVCGNGRLEGNEICDCGTEAQCGPASCCD
FRTCVLKDGAKCYKGLCKDCQILQSGVECRPKAHEPCDIAENCNGSSPECGPDITLINGLSCKNNKFIC
YDGDCHDLARCESVFGKGSRNAPFACYEEIQSQSDRFGNCGRDRNNKYVFCGWRNLICGRLVCTYPTRK
PFHQENGDIYAFVRDSVCITVDYKLPRTVPDPLAVKNGSQCDIGRVCVNRECVESRIIKASAHVCSQQC
SGHGVCDSRNKCHCSPGYKPPNCQIRSKGFSIFPEEDMGSIMERASGKTENTWLLGFLIALPILIVTTAI
VLARKQLKKWFAKEEFPSSESKSEGSTQTYASQSSSEGSTQTYASQTRSESSSQADTSKSKSEDSAEAY
TSRSKSDSTQTQSSSN

TRTRPLEQKLISEEDLAANDILDYKDDDDKV

Tag: C-Myc/DDK

Predicted MW: 87.8 kDa

Concentration: >0.05 µg/µL as determined by microplate BCA method

Purity: > 80% as determined by SDS-PAGE and Coomassie blue staining

Buffer: 25 mM Tris-HCl, 100 mM glycine, pH 7.3, 10% glycerol

Preparation: Recombinant protein was captured through anti-DDK affinity column followed by conventional chromatography steps.

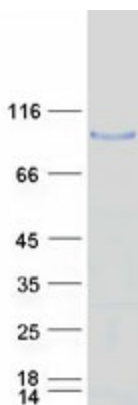
Note: For testing in cell culture applications, please filter before use. Note that you may experience some loss of protein during the filtration process.



[View online »](#)

Storage:	Store at -80°C.
Stability:	Stable for 12 months from the date of receipt of the product under proper storage and handling conditions. Avoid repeated freeze-thaw cycles.
RefSeq:	NP_659441
Locus ID:	203102
UniProt ID:	Q8TC27 , A0A140VJD9
RefSeq Size:	2742
Cytogenetics:	8p11.22
RefSeq ORF:	2361
Summary:	This gene encodes a member of the disintegrin family of membrane-anchored proteins that play a role in diverse biological processes such as brain development, fertilization, tumor development and inflammation. This gene is predominantly expressed in the testis. The encoded protein undergoes proteolytic processing to generate a mature polypeptide comprised of an metalloprotease, disintegrin and epidermal growth factor-like domains. This gene is located in a cluster of other disintegrin and metalloprotease family genes on chromosome 8. Alternative splicing results in multiple transcript variants encoding different isoforms. [provided by RefSeq, Sep 2015]
Protein Families:	Protease, Transmembrane

Product images:



Coomassie blue staining of purified ADAM32 protein (Cat# [TP305515]). The protein was produced from HEK293T cells transfected with ADAM32 cDNA clone (Cat# [RC205515]) using MegaTran 2.0 (Cat# [TT210002]).