

## Product datasheet for **TP305513L**

### TRUB1 (NM\_139169) Human Recombinant Protein

#### Product data:

Product Type:	Recombinant Proteins
Description:	Recombinant protein of human TruB pseudouridine (psi) synthase homolog 1 (E. coli) (TRUB1), 1 mg
Species:	Human
Expression Host:	HEK293T
Expression cDNA Clone or AA Sequence:	>RC205513 protein sequence <b>Red</b> =Cloning site <b>Green</b> =Tags(s)

MAASEAAVSSPSLKTDTSPVLETAGTVAAMAATPSARAAA VAAAARTGSEARVSKAALATKLLSLSG  
VFAVHKPKGPTSAELNRLKEKLLAEAGMPSPPEWTKRKKQTLKIGHGGTLD SAARGVLVVGISGKMLT  
SMLSGSKRYTAIGELGKATDLDSTGRVTEEKPYDKITQEDIEGILQKFTGNIMQVPPLYSALKKDGQRL  
STLMKRGEVVEAKPARPVTVYSISLQKFQPPFFTL DVECGGGFYIRSLVSDIGKELSSCANVLELTRTKQ  
GPFTLEEHALPEDKWTIDDIAQSLEHCSSLFPAELALKKSKPESNEQVLSCEYITLNEPKREDDVIKTC

**TR**TRPLEQKLISEEDLAANDILDYKDDDDKV

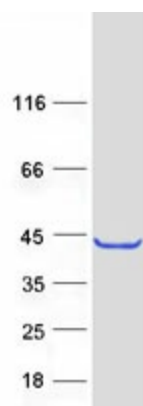
Tag:	C-Myc/DDK
Predicted MW:	37.1 kDa
Concentration:	>0.05 µg/µL as determined by microplate BCA method
Purity:	> 80% as determined by SDS-PAGE and Coomassie blue staining
Buffer:	25 mM Tris-HCl, 100 mM glycine, pH 7.3, 10% glycerol
Preparation:	Recombinant protein was captured through anti-DDK affinity column followed by conventional chromatography steps.
Note:	For testing in cell culture applications, please filter before use. Note that you may experience some loss of protein during the filtration process.
Storage:	Store at -80°C.
Stability:	Stable for 12 months from the date of receipt of the product under proper storage and handling conditions. Avoid repeated freeze-thaw cycles.
RefSeq:	<a href="#">NP_631908</a>
Locus ID:	142940



[View online »](#)

UniProt ID:	<a href="#">Q8WWH5</a>
RefSeq Size:	3412
Cytogenetics:	10q25.3
RefSeq ORF:	1047
Synonyms:	PUS4
Summary:	Pseudouridine is an abundant component of rRNAs and tRNAs and is enzymatically generated by isomerization of uridine by pseudouridine synthase (Zucchini et al., 2003 [PubMed 12736709]).[supplied by OMIM, Mar 2008]

### Product images:



Coomassie blue staining of purified TRUB1 protein (Cat# [TP305513]). The protein was produced from HEK293T cells transfected with TRUB1 cDNA clone (Cat# [RC205513]) using MegaTran 2.0 (Cat# [TT210002]).