

Product datasheet for **TP305507M**

PEA15 (NM_003768) Human Recombinant Protein

Product data:

Product Type:	Recombinant Proteins
Description:	Recombinant protein of human phosphoprotein enriched in astrocytes 15 (PEA15), 100 µg
Species:	Human
Expression Host:	HEK293T
Expression cDNA Clone or AA Sequence:	>RC205507 protein sequence Red =Cloning site Green =Tags(s)

MAEYGTLLQDLTNNITLEDLEQLKSACKEDIPSEKSEEITGSAWFSLFLESHNKLDKDNLSYIEHIFEIS
RRPDLLTMVDYRTRVLKISEEDELDTKLTRIPSAKKYKDIIRQPSEEEIILAPPPKKA

TRTRPLEQKLISEEDLAANDILDYKDDDDKV

Tag:	C-Myc/DDK
Predicted MW:	14.9 kDa
Concentration:	>0.05 µg/µL as determined by microplate BCA method
Purity:	> 80% as determined by SDS-PAGE and Coomassie blue staining
Buffer:	25 mM Tris-HCl, 100 mM glycine, pH 7.3, 10% glycerol
Preparation:	Recombinant protein was captured through anti-DDK affinity column followed by conventional chromatography steps.
Note:	For testing in cell culture applications, please filter before use. Note that you may experience some loss of protein during the filtration process.
Storage:	Store at -80°C.
Stability:	Stable for 12 months from the date of receipt of the product under proper storage and handling conditions. Avoid repeated freeze-thaw cycles.
RefSeq:	NP_003759
Locus ID:	8682
UniProt ID:	Q15121 , B1AKZ4 , Q96FS5
RefSeq Size:	2509
Cytogenetics:	1q23.2



[View online »](#)

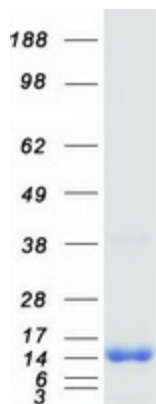
RefSeq ORF: 390

Synonyms: HMAT1; HUMMAT1H; MAT1; MAT1H; PEA-15; PED; PED-PEA15; PED/PEA15

Summary: This gene encodes a death effector domain-containing protein that functions as a negative regulator of apoptosis. The encoded protein is an endogenous substrate for protein kinase C. This protein is also overexpressed in type 2 diabetes mellitus, where it may contribute to insulin resistance in glucose uptake. Alternative splicing results in multiple transcript variants. [provided by RefSeq, Jul 2014]

Protein Families: Druggable Genome

Product images:



Coomassie blue staining of purified PEA15 protein (Cat# [TP305507]). The protein was produced from HEK293T cells transfected with PEA15 cDNA clone (Cat# [RC205507]) using MegaTran 2.0 (Cat# [TT210002]).