

Product datasheet for **TP305507L**

PEA15 (NM_003768) Human Recombinant Protein

Product data:

| | |
|---------------------------------------|---|
| Product Type: | Recombinant Proteins |
| Description: | Recombinant protein of human phosphoprotein enriched in astrocytes 15 (PEA15), 1 mg |
| Species: | Human |
| Expression Host: | HEK293T |
| Expression cDNA Clone or AA Sequence: | >RC205507 protein sequence Red =Cloning site Green =Tags(s) |

MAEYGTLLQDLTNNITLEDLEQLKSACKEDIPSEKSEEITGSAWFSLFLESHNKLDKDNLSYIEHIFEIS
RRPDLLTMVDYRTRVLKISEEDELDTKLTRIPSAKKYKDIIRQPSEEEIILAPPPKKA

TRTRPLEQKLISEEDLAANDILDYKDDDDKV

| | |
|----------------|--|
| Tag: | C-Myc/DDK |
| Predicted MW: | 14.9 kDa |
| Concentration: | >0.05 µg/µL as determined by microplate BCA method |
| Purity: | > 80% as determined by SDS-PAGE and Coomassie blue staining |
| Buffer: | 25 mM Tris-HCl, 100 mM glycine, pH 7.3, 10% glycerol |
| Preparation: | Recombinant protein was captured through anti-DDK affinity column followed by conventional chromatography steps. |
| Note: | For testing in cell culture applications, please filter before use. Note that you may experience some loss of protein during the filtration process. |
| Storage: | Store at -80°C. |
| Stability: | Stable for 12 months from the date of receipt of the product under proper storage and handling conditions. Avoid repeated freeze-thaw cycles. |
| RefSeq: | NP_003759 |
| Locus ID: | 8682 |
| UniProt ID: | Q15121 , B1AKZ4 , Q96FS5 |
| RefSeq Size: | 2509 |
| Cytogenetics: | 1q23.2 |



[View online »](#)

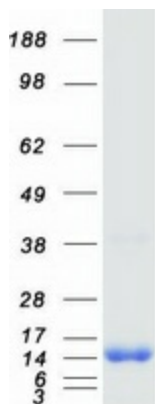
RefSeq ORF: 390

Synonyms: HMAT1; HUMMAT1H; MAT1; MAT1H; PEA-15; PED; PED-PEA15; PED/PEA15

Summary: This gene encodes a death effector domain-containing protein that functions as a negative regulator of apoptosis. The encoded protein is an endogenous substrate for protein kinase C. This protein is also overexpressed in type 2 diabetes mellitus, where it may contribute to insulin resistance in glucose uptake. Alternative splicing results in multiple transcript variants. [provided by RefSeq, Jul 2014]

Protein Families: Druggable Genome

Product images:



Coomassie blue staining of purified PEA15 protein (Cat# [TP305507]). The protein was produced from HEK293T cells transfected with PEA15 cDNA clone (Cat# [RC205507]) using MegaTran 2.0 (Cat# [TT210002]).