

## Product datasheet for **TP305478L**

### **LYZL4 (NM\_144634) Human Recombinant Protein**

#### **Product data:**

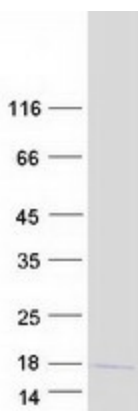
Product Type:	Recombinant Proteins
Description:	Recombinant protein of human lysozyme-like 4 (LYZL4), 1 mg
Species:	Human
Expression Host:	HEK293T
Expression cDNA Clone or AA Sequence:	>RC205478 protein sequence <b>Red</b> =Cloning site <b>Green</b> =Tags(s)
	MKASVLSLLGYLVPSGAYILGRCTVAKKLHDGGLDYFEGYSLENWVCLAYFESKFNPMAIYENTREGY TGFGFLFQMRGSDWCGDHGRNRCHMSCSALLNPNLEKTIKAKTIVKGKEGMGAWPTWSRYCQYSDTLA RW LDGCKL
	<b>TR</b> TRPLEQKLISEEDLAANDILDYKDDDDKV
Tag:	C-Myc/DDK
Predicted MW:	16.3 kDa
Concentration:	>0.05 µg/µL as determined by microplate BCA method
Purity:	> 80% as determined by SDS-PAGE and Coomassie blue staining
Buffer:	25 mM Tris-HCl, 100 mM glycine, pH 7.3, 10% glycerol
Preparation:	Recombinant protein was captured through anti-DDK affinity column followed by conventional chromatography steps.
Note:	For testing in cell culture applications, please filter before use. Note that you may experience some loss of protein during the filtration process.
Storage:	Store at -80°C.
Stability:	Stable for 12 months from the date of receipt of the product under proper storage and handling conditions. Avoid repeated freeze-thaw cycles.
RefSeq:	<u><a href="#">NP_653235</a></u>
Locus ID:	131375
UniProt ID:	<u><a href="#">Q96KX0</a></u>



[View online »](#)

RefSeq Size:	886
Cytogenetics:	3p22.1
RefSeq ORF:	438
Synonyms:	LYC4; LYZA
Summary:	Lysozymes (see LYZ; MIM 153450), especially C-type lysozymes, are well-recognized bacteriolytic factors widely distributed in the animal kingdom and play a mainly protective role in host defense. LYZL4 is a member of a family of lysozyme-like genes (Zhang et al., 2005 [PubMed 16014814]).[supplied by OMIM, Apr 2009]
Protein Families:	Secreted Protein

### Product images:



Coomassie blue staining of purified LYZL4 protein (Cat# [TP305478]). The protein was produced from HEK293T cells transfected with LYZL4 cDNA clone (Cat# [RC205478]) using MegaTran 2.0 (Cat# [TT210002]).