

## Product datasheet for **TP305458M**

### WBS28 (WBSCR28) (NM\_182504) Human Recombinant Protein

#### Product data:

Product Type:	Recombinant Proteins
Description:	Recombinant protein of human Williams-Beuren syndrome chromosome region 28 (WBSCR28), 100 µg
Species:	Human
Expression Host:	HEK293T
Expression cDNA Clone or AA Sequence:	>RC205458 protein sequence <b>Red</b> =Cloning site <b>Green</b> =Tags(s)

MEALPPVRSSLLGNLLQVTRLSVLLVQNRDHLYNFLLLKINLNFNHVWSGLAQEARGSCNWOAHLPLGAAD  
CPLGQALRAGLALIQVPVWLVLQGPRLMWAGMWGSTKGLGLALLSAWEQLGLSVAIWTDLFLSCLHGLML  
VALLLVVWTWRVCQKSHCFRLGRQLSKALQVNCVVRKLLVQLRRLYWWVETMTALTSWHLAYLITWTTCL  
ASHLLQAAFEHTTQLAEAQEVPEVSGSSLLPSLSASSDSESGTVLPEQETPRE

**TR**TRPLE**QKLISEEDLAANDILDYKDDDDKV**

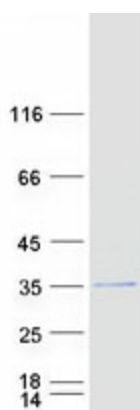
Tag:	C-Myc/DDK
Predicted MW:	29.3 kDa
Concentration:	>0.05 µg/µL as determined by microplate BCA method
Purity:	> 80% as determined by SDS-PAGE and Coomassie blue staining
Buffer:	25 mM Tris-HCl, 100 mM glycine, pH 7.3, 10% glycerol
Preparation:	Recombinant protein was captured through anti-DDK affinity column followed by conventional chromatography steps.
Note:	For testing in cell culture applications, please filter before use. Note that you may experience some loss of protein during the filtration process.
Storage:	Store at -80°C.
Stability:	Stable for 12 months from the date of receipt of the product under proper storage and handling conditions. Avoid repeated freeze-thaw cycles.
RefSeq:	<u><a href="#">NP_872310</a></u>
Locus ID:	135886



[View online »](#)

UniProt ID: [Q6UE05](#)  
RefSeq Size: 857  
Cytogenetics: 7q11.23  
RefSeq ORF: 795  
Synonyms: WBSCR28  
Protein Families: Transmembrane

### Product images:



Coomassie blue staining of purified TMEM270 protein (Cat# [TP305458]). The protein was produced from HEK293T cells transfected with TMEM270 cDNA clone (Cat# [RC205458]) using MegaTran 2.0 (Cat# [TT210002]).