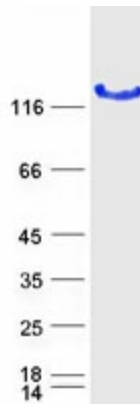




<b>Stability:</b>	Stable for 12 months from the date of receipt of the product under proper storage and handling conditions. Avoid repeated freeze-thaw cycles.
<b>RefSeq:</b>	<a href="#">NP_848547</a>
<b>Locus ID:</b>	123872
<b>UniProt ID:</b>	<a href="#">Q8NEP3</a> , <a href="#">A0A140VJN4</a>
<b>RefSeq Size:</b>	2451
<b>Cytogenetics:</b>	16q24.1
<b>RefSeq ORF:</b>	2175
<b>Synonyms:</b>	CILD13; DAU1; LRRC50; ODA7; swt
<b>Summary:</b>	The protein encoded by this gene is cilium-specific and is required for the stability of the ciliary architecture. It is involved in the regulation of microtubule-based cilia and actin-based brush border microvilli. Mutations in this gene are associated with primary ciliary dyskinesia-13. Alternative splicing results in multiple transcript variants. [provided by RefSeq, Jan 2016]

### Product images:



Coomassie blue staining of purified DNAAF1 protein (Cat# [TP305452]). The protein was produced from HEK293T cells transfected with DNAAF1 cDNA clone (Cat# [RC205452]) using MegaTran 2.0 (Cat# [TT210002]).