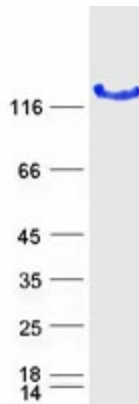


Stability:	Stable for 12 months from the date of receipt of the product under proper storage and handling conditions. Avoid repeated freeze-thaw cycles.
RefSeq:	NP_848547
Locus ID:	123872
UniProt ID:	Q8NEP3 , A0A140VJN4
RefSeq Size:	2451
Cytogenetics:	16q24.1
RefSeq ORF:	2175
Synonyms:	CILD13; DAU1; LRRC50; ODA7; swt
Summary:	The protein encoded by this gene is cilium-specific and is required for the stability of the ciliary architecture. It is involved in the regulation of microtubule-based cilia and actin-based brush border microvilli. Mutations in this gene are associated with primary ciliary dyskinesia-13. Alternative splicing results in multiple transcript variants. [provided by RefSeq, Jan 2016]

Product images:



Coomassie blue staining of purified DNAAF1 protein (Cat# TP305452). The protein was produced from HEK293T cells transfected with DNAAF1 cDNA clone (Cat# [RC205452]) using MegaTran 2.0 (Cat# [TT210002]).