

## Product datasheet for **TP305448L**

### **KPNA4 (NM\_002268) Human Recombinant Protein**

#### **Product data:**

**Product Type:** Recombinant Proteins

**Description:** Recombinant protein of human karyopherin alpha 4 (importin alpha 3) (KPNA4), 1 mg

**Species:** Human

**Expression Host:** HEK293T

**Expression cDNA Clone** >RC205448 protein sequence

**or AA Sequence:** **Red**=Cloning site **Green**=Tags(s)

MADNEKLDNQRLKNFKNKGRDLETMRRQRNEVVELRKNKRDEHLLKRRNVPHEICEDSDIDGDYRVQN  
TSLEAIVQNASSDNQGIQLSAVQAARKLLSSDRNPPIDDLIKSGILPILVHCLERDDNPSLQFEAAWALT  
NIASGTSEQTQAVVQSNAVPLFLRLLHSPHQNVCEQAVWALGNIIGDGPQCRDYVISLGVKPLLSFISP  
SIPITFLRNVTWVMVNLCRHKDPPPPMETIQEILPALCVLIHHTDVNVLVDTVWALSYLTDAGNEQIQMV  
IDSGIVPHLVPLLSHQEVKVTAAALRAVGNIVTGTDEQTQVVLNCDALSHFPALLTHPKEKINKEAVWFL  
SNITAGNQQVQVAVIDANLVPMIHLLDKGDFGTQKEAAWISNLTISGRKDQVAYLIQQNVIPPFCNLL  
TVKDAQVQVVDGLSNILKMAEDEAETIGNLIEECGGLEKIEQLQNHENEDIYKLAYEIIDQFFSSDDI  
DEDPSLVPEAIQGGTGFNSSANVPTEGFQF

**TRTRPLEQKLISEEDLAANDILDYKDDDDKV**

**Tag:** C-Myc/DDK

**Predicted MW:** 57.7 kDa

**Concentration:** >0.05 µg/µL as determined by microplate BCA method

**Purity:** > 80% as determined by SDS-PAGE and Coomassie blue staining

**Buffer:** 25 mM Tris-HCl, 100 mM glycine, pH 7.3, 10% glycerol

**Preparation:** Recombinant protein was captured through anti-DDK affinity column followed by conventional chromatography steps.

**Note:** For testing in cell culture applications, please filter before use. Note that you may experience some loss of protein during the filtration process.

**Storage:** Store at -80°C.

**Stability:** Stable for 12 months from the date of receipt of the product under proper storage and handling conditions. Avoid repeated freeze-thaw cycles.



[View online >](#)

RefSeq: [NP\\_002259](#)

Locus ID: 3840

UniProt ID: [O00629](#)

RefSeq Size: 8981

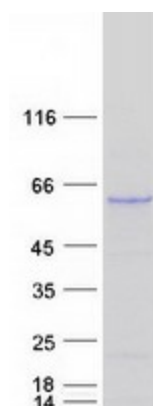
Cytogenetics: 3q25.33

RefSeq ORF: 1563

Synonyms: IPOA3; QIP1; SRP3

**Summary:** The nuclear import of karyophilic proteins is directed by short amino acid sequences termed nuclear localization signals (NLSs). Karyopherins, or importins, are cytoplasmic proteins that recognize NLSs and dock NLS-containing proteins to the nuclear pore complex. The protein encoded by this gene shares the sequence similarity with *Xenopus* importin-alpha and *Saccharomyces cerevisiae* Srp1. This protein is found to interact with the NLSs of DNA helicase Q1 and SV40 T antigen. [provided by RefSeq, Jul 2008]

### Product images:



Coomassie blue staining of purified KPNA4 protein (Cat# [TP305448]). The protein was produced from HEK293T cells transfected with KPNA4 cDNA clone (Cat# [RC205448]) using MegaTran 2.0 (Cat# [TT210002]).