

Product datasheet for **TP305448**

KPNA4 (NM_002268) Human Recombinant Protein

Product data:

Product Type: Recombinant Proteins

Description: Recombinant protein of human karyopherin alpha 4 (importin alpha 3) (KPNA4), 20 µg

Species: Human

Expression Host: HEK293T

Expression cDNA Clone or AA Sequence: >RC205448 protein sequence
Red=Cloning site **Green**=Tags(s)

MADNEKLDNQRLKNFKNKGRDLETMRRQRNEVVELRKNKRDEHLLKRRNVPHEICEDSDIDGDYRVQN
TSLEAIVQNASSDNQGIQLSAVQAARKLLSSDRNPPIDDLIKSGILPILVHCLERDDNPSLQFEAAWALT
NIASGTSEQTQAVVQSNAVPLFLRLLHSPHQNVCEQAVWALGNIIGDGPQCRDYVISLGVKPLLSFISP
SIPITFLRNVTWVMVNLCRHKDPPPPMETIQEILPALCVLIHHTDVNVLVDTVWALSYLTDAGNEIQIMV
IDSGIVPHLVPLLSHQEVKVTAAALRAVGNIVTGTDEQTQVVLNCDALSHFPALLTHPKEKINKEAVWFL
SNITAGNQQVQVAVIDANLVPMIHLLDKGDFGTQKEAAWASNLTISGRKDQVAYLIQQNVIPPFCNLL
TVKDAQVQVVDGLSNILKMAEDEAETIGNLIEECGGLEKIEQLQNHENEDIYKLAYEIIDQFFSSDDI
DEDPSLVPEAIQGGTGFNSSANVPTGEFQF

TRTRPLEQKLISEEDLAANDILDYKDDDDKV

Tag: C-Myc/DDK

Predicted MW: 57.7 kDa

Concentration: >0.05 µg/µL as determined by microplate BCA method

Purity: > 80% as determined by SDS-PAGE and Coomassie blue staining

Buffer: 25 mM Tris-HCl, 100 mM glycine, pH 7.3, 10% glycerol

Preparation: Recombinant protein was captured through anti-DDK affinity column followed by conventional chromatography steps.

Note: For testing in cell culture applications, please filter before use. Note that you may experience some loss of protein during the filtration process.

Storage: Store at -80°C.

Stability: Stable for 12 months from the date of receipt of the product under proper storage and handling conditions. Avoid repeated freeze-thaw cycles.



[View online »](#)

RefSeq: [NP_002259](#)

Locus ID: 3840

UniProt ID: [O00629](#)

RefSeq Size: 8981

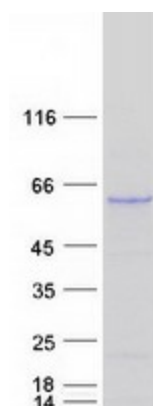
Cytogenetics: 3q25.33

RefSeq ORF: 1563

Synonyms: IPOA3; QIP1; SRP3

Summary: The nuclear import of karyophilic proteins is directed by short amino acid sequences termed nuclear localization signals (NLSs). Karyopherins, or importins, are cytoplasmic proteins that recognize NLSs and dock NLS-containing proteins to the nuclear pore complex. The protein encoded by this gene shares the sequence similarity with *Xenopus* importin-alpha and *Saccharomyces cerevisiae* Srp1. This protein is found to interact with the NLSs of DNA helicase Q1 and SV40 T antigen. [provided by RefSeq, Jul 2008]

Product images:



Coomassie blue staining of purified KPNA4 protein (Cat# TP305448). The protein was produced from HEK293T cells transfected with KPNA4 cDNA clone (Cat# [RC205448]) using MegaTran 2.0 (Cat# [TT210002]).