

## Product datasheet for **TP305446L**

### **CYP46 (CYP46A1) (NM\_006668) Human Recombinant Protein**

#### Product data:

Product Type:	Recombinant Proteins
Description:	Recombinant protein of human cytochrome P450, family 46, subfamily A, polypeptide 1 (CYP46A1), 1 mg
Species:	Human
Expression Host:	HEK293T
Expression cDNA Clone or AA Sequence:	>RC205446 protein sequence <b>Red</b> =Cloning site <b>Green</b> =Tags(s)

MSPGLLLGSAVLLAFGLCCTFVHRARSRYEHIPGPPRPSFLLGHLPCFWKKDEVGGRVLQDVFLDWAKK  
YGPVVRVNVFHKTSVIVTSPESVKKFLMSTKYNKDSKMYRALQTVFGERLFGQGLVSECNYERWHKQRRV  
IDLAFSRSSLVSLMETFNEKAEQLVEILEAKADGQTPVSMQDMLTYTAMDILAKAAFGMETSMLLGAQKP  
LSQAVKLMLEGITASRNTLAKFLPGKRKQLREVRESIRFLRQVGRDWWQRRREALKRGEVVPADILTQIL  
KAEEGAQDDEGLLDNFVTFIAGHETSANHLAFTVMELSRQPEIVARLQAEVDEVIGSKRYLDFEDLGRL  
QYLSQVLKESLRLYPPAWGTFRLLEEETLIDGVRVPGNTPLLSTYVMGRMDTYFEDPLTFNPDRFGPGA  
PKPRFTYFPFSLGHRSCIGQQFAQMEVKVMAKLLQRLEFRLVPGQRFGLQEATLKPLDPLVCLTLRPRG  
WQPAPPPPPC

**TRTRPLEQKLISEEDLAANDILDYKDDDDKV**

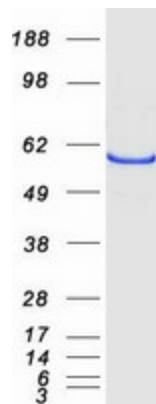
Tag:	C-Myc/DDK
Predicted MW:	56.6 kDa
Concentration:	>0.1 µg/µL as determined by microplate BCA method
Purity:	> 80% as determined by SDS-PAGE and Coomassie blue staining
Buffer:	25 mM Tris-HCl, 100 mM glycine, pH 7.3, 10% glycerol
Preparation:	Recombinant protein was captured through anti-DDK affinity column followed by conventional chromatography steps.
Note:	For testing in cell culture applications, please filter before use. Note that you may experience some loss of protein during the filtration process.
Storage:	Store at -80°C.



[View online »](#)

<b>Stability:</b>	Stable for 12 months from the date of receipt of the product under proper storage and handling conditions. Avoid repeated freeze-thaw cycles.
<b>RefSeq:</b>	<a href="#">NP_006659</a>
<b>Locus ID:</b>	10858
<b>UniProt ID:</b>	<a href="#">Q9Y6A2</a>
<b>RefSeq Size:</b>	2138
<b>Cytogenetics:</b>	14q32.2
<b>RefSeq ORF:</b>	1500
<b>Synonyms:</b>	CP46; CYP46
<b>Summary:</b>	This gene encodes a member of the cytochrome P450 superfamily of enzymes. The cytochrome P450 proteins are monooxygenases which catalyze many reactions involved in drug metabolism and synthesis of cholesterol, steroids and other lipids. This endoplasmic reticulum protein is expressed in the brain, where it converts cholesterol to 24S-hydroxycholesterol. While cholesterol cannot pass the blood-brain barrier, 24S-hydroxycholesterol can be secreted in the brain into the circulation to be returned to the liver for catabolism. [provided by RefSeq, Jul 2008]
<b>Protein Families:</b>	Druggable Genome, P450
<b>Protein Pathways:</b>	Primary bile acid biosynthesis

### Product images:



Coomassie blue staining of purified CYP46A1 protein (Cat# [TP305446]). The protein was produced from HEK293T cells transfected with CYP46A1 cDNA clone (Cat# [RC205446]) using MegaTran 2.0 (Cat# [TT210002]).