

Product datasheet for **TP305444L**

SLC25A42 (NM_178526) Human Recombinant Protein

Product data:

Product Type:	Recombinant Proteins
Description:	Recombinant protein of human solute carrier family 25, member 42 (SLC25A42), 1 mg
Species:	Human
Expression Host:	HEK293T
Expression cDNA Clone or AA Sequence:	>RC205444 protein sequence Red =Cloning site Green =Tags(s)
	<p>MGNGVKEGPVRLHEDAEAVLSSSVSSKRDHRQVLSSLLPGALAGALAKTAVAPLDRTKIIFQVSSKRFS KEAFRVLYTYLNEGFLSLWRGNSATMVRVVPYAAIQFSAHEEYKRILGSYYGFRGEALPPWPRLFAGAL AGTTAASLTYPDLVRARMAVTPKEMYSNIFHVFIRISREEGLKTLYHGFMPVLGVIPYAGLSFFTYET LKSLHREYSGRRQYPFERMIFGACAGLIGQSASYPLDVRRRMQTAGVTGYPRASIARTLRTIVREEGA VRGLYKGLSMNWVKGPVAVGISFTTFDLMQIMLRHLQS</p> <p>TRTRPLEQKLISEEDLAANDILDYKDDDDKV</p>
Tag:	C-Myc/DDK
Predicted MW:	35.2 kDa
Concentration:	>0.05 µg/µL as determined by microplate BCA method
Purity:	> 80% as determined by SDS-PAGE and Coomassie blue staining
Buffer:	25 mM Tris-HCl, 100 mM glycine, pH 7.3, 10% glycerol
Preparation:	Recombinant protein was captured through anti-DDK affinity column followed by conventional chromatography steps.
Note:	For testing in cell culture applications, please filter before use. Note that you may experience some loss of protein during the filtration process.
Storage:	Store at -80°C.
Stability:	Stable for 12 months from the date of receipt of the product under proper storage and handling conditions. Avoid repeated freeze-thaw cycles.
RefSeq:	<u>NP_848621</u>
Locus ID:	284439



[View online »](#)

UniProt ID: [Q86VD7](#)

RefSeq Size: 3279

Cytogenetics: 19p13.11

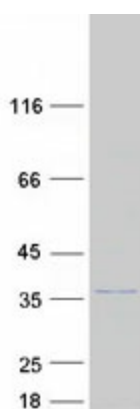
RefSeq ORF: 954

Synonyms: MECREN

Summary: This gene encodes a solute carrier family 25 protein. Solute carrier family 25 proteins are localized to mitochondria and play critical roles in the transport of molecules across the inner mitochondrial membrane. The encoded protein is a mitochondrial transporter for coenzyme A (CoA) and adenosine 3',5'-diphosphate. [provided by RefSeq, Feb 2012]

Protein Families: Druggable Genome

Product images:



Coomassie blue staining of purified SLC25A42 protein (Cat# [TP305444]). The protein was produced from HEK293T cells transfected with SLC25A42 cDNA clone (Cat# [RC205444]) using MegaTran 2.0 (Cat# [TT210002]).