

Product datasheet for **TP305442L**

VTA1 (NM_016485) Human Recombinant Protein

Product data:

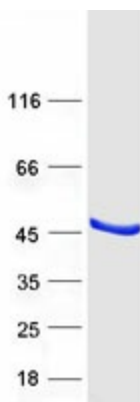
Product Type:	Recombinant Proteins
Description:	Recombinant protein of human Vps20-associated 1 homolog (<i>S. cerevisiae</i>) (VTA1), 1 mg
Species:	Human
Expression Host:	HEK293T
Expression cDNA Clone or AA Sequence:	>RC205442 protein sequence Red =Cloning site Green =Tags(s)
	<p>MAALAPLPLPAQFKSIQHHLRTAQEHDKRDPVVAYYCRLYAMQTGMKIDSKTPECRKFLSKLMDQLEAL KKQLGDNEAITQEIVGCAHLENYALKMFLYADNEDRAGRFRHKNMIKSFYTASLLIDVITVFGELTDENVK HRKYARWKATYIHNCLKNGETPQAGPVGIEEDNDIEENEDAGAASLPTQPTQPSSSSTYDPSNMPSGNYT GIQIPGAHAPANTPAEVPSTGVASNTIQPTQTIPAI DPALFNTISQGDVRLTPEDFARAQKYCKYAG SALQYEDVSTAVQNLQKALKLLTTGRE</p> <p>TRTRPLEQKLISEEDLAANDILDYKDDDDKV</p>
Tag:	C-Myc/DDK
Predicted MW:	33.7 kDa
Concentration:	>0.05 µg/µL as determined by microplate BCA method
Purity:	> 80% as determined by SDS-PAGE and Coomassie blue staining
Buffer:	25 mM Tris-HCl, 100 mM glycine, pH 7.3, 10% glycerol
Preparation:	Recombinant protein was captured through anti-DDK affinity column followed by conventional chromatography steps.
Note:	For testing in cell culture applications, please filter before use. Note that you may experience some loss of protein during the filtration process.
Storage:	Store at -80°C.
Stability:	Stable for 12 months from the date of receipt of the product under proper storage and handling conditions. Avoid repeated freeze-thaw cycles.
RefSeq:	<u>NP_057569</u>
Locus ID:	51534



[View online »](#)

UniProt ID:	Q9NP79
RefSeq Size:	3371
Cytogenetics:	6q24.1-q24.2
RefSeq ORF:	921
Synonyms:	C6orf55; DRG-1; DRG1; HSPC228; LIP5; My012; SBP1
Summary:	C6ORF55 encodes a protein involved in trafficking of the multivesicular body, an endosomal compartment involved in sorting membrane proteins for degradation in lysosomes (Ward et al., 2005 [PubMed 15644320]).[supplied by OMIM, Mar 2008]
Protein Pathways:	Endocytosis

Product images:



Coomassie blue staining of purified VTA1 protein (Cat# [TP305442]). The protein was produced from HEK293T cells transfected with VTA1 cDNA clone (Cat# [RC205442]) using MegaTran 2.0 (Cat# [TT210002]).