

Product datasheet for **TP305441**

DPPA2 (NM_138815) Human Recombinant Protein

Product data:

Product Type:	Recombinant Proteins
Description:	Purified recombinant protein of Human developmental pluripotency associated 2 (DPPA2), full length, with C-terminal MYC/DDK tag, expressed in HEK293T cells, 20 µg
Species:	Human
Expression Host:	HEK293T
Expression cDNA Clone or AA Sequence:	>RC205441 protein sequence Red =Cloning site Green =Tags(s)

MSDANLDSSKKNFLEGEVDDEESVILTLVPVKDDANMEQMEPSVSSTSDVKLEKPKKYNPGHLLQTNEQF
TAPQKARCKIPALPLPTILPPINKVCRDTRLRDWCQQLGLSTNGKKIEVYLRHRHAYPEQRQDMPEMSQE
TRLQRCRKRKAVTKRARLQRSYEMNERAEETNTVEVITSAPGAMLASWARIAARAVQPKALNSCSIPVS
VEAFMQASGVRWCVVHGRLLSADTKGWVRLQFHAGQAWVPTTHRRMISLFLLPACIFPSPGIEDNMLCP
DCAKRNNKMMKRLMTVEK

TRTRPLEQKLISEEDLAANDILDYKDDDDKV

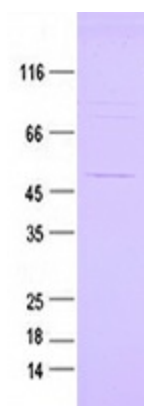
Tag:	Myc-DDK
Predicted MW:	33.8 kDa
Concentration:	>0.05 µg/µL as determined by microplate BCA method
Purity:	> 80% as determined by SDS-PAGE and Coomassie blue staining
Buffer:	25 mM Tris-HCl, 100 mM glycine, pH 7.3, 10% glycerol
Note:	For testing in cell culture applications, please filter before use. Note that you may experience some loss of protein during the filtration process.
Storage:	Store at -80°C.
Stability:	Stable for 12 months from the date of receipt of the product under proper storage and handling conditions. Avoid repeated freeze-thaw cycles.
RefSeq:	NP_620170
Locus ID:	151871
UniProt ID:	Q7Z7J5



[View online »](#)

RefSeq Size:	1393
Cytogenetics:	3q13.13
RefSeq ORF:	894
Synonyms:	CT100; ECAT15-2; PESCRG1
Summary:	Binds to target gene promoters, including NKX2-5 and SYCE1, but not GATA4, and may be involved in the maintenance of the active epigenetic status of these genes.[UniProtKB/Swiss-Prot Function]
Protein Families:	Embryonic stem cells, Induced pluripotent stem cells, Stem cell - Pluripotency

Product images:



Coomassie blue staining of purified DPPA2 protein (Cat# TP305441). The protein was produced from HEK293T cells transfected with DPPA2 cDNA clone (Cat# [RC205441]) using MegaTran 2.0 (Cat# [TT210002]).