

Product datasheet for **TP305432M**

Neuronal membrane glycoprotein M6 a (GPM6A) (NM_005277) Human Recombinant Protein

Product data:

Product Type:	Recombinant Proteins
Description:	Recombinant protein of human glycoprotein M6A (GPM6A), transcript variant 1, 100 µg
Species:	Human
Expression Host:	HEK293T
Expression cDNA Clone or AA Sequence:	>RC205432 protein sequence Red =Cloning site Green =Tags(s)
	 MEENMEEGQTQKGCFECCIKCLGGIPYASLIATILLYAGVALFCGCGHEALSGTVNQLQTYFEMARTAGD TLDVFTMIDIFKYVIYGIAAAFFVYGILLMVEGFFTTGAIKDLYGDFKITTCGRCVSAWFIMLTFLMLA WLGVTAFTSLPVYMYFNLWTICRNTTLVEGANLCLDLRQFGIVTIGEEKKICTVSENFLRMCESTELNMT FHLFIVALAGAGAAVIAMVHYLMVLSANWAYVKDACRMQKYEDIKSKEEQELHDIHSTRSKERLNAYT TRTRPLEQKLISEEDLAANDILDYKDDDDKV
Tag:	C-Myc/DDK
Predicted MW:	31 kDa
Concentration:	>0.05 µg/µL as determined by microplate BCA method
Purity:	> 80% as determined by SDS-PAGE and Coomassie blue staining
Buffer:	25 mM Tris-HCl, 100 mM glycine, pH 7.3, 10% glycerol
Preparation:	Recombinant protein was captured through anti-DDK affinity column followed by conventional chromatography steps.
Note:	For testing in cell culture applications, please filter before use. Note that you may experience some loss of protein during the filtration process.
Storage:	Store at -80°C.
Stability:	Stable for 12 months from the date of receipt of the product under proper storage and handling conditions. Avoid repeated freeze-thaw cycles.
RefSeq:	NP_005268
Locus ID:	2823
UniProt ID:	P51674



[View online »](#)

RefSeq Size: 3215

Cytogenetics: 4q34.2

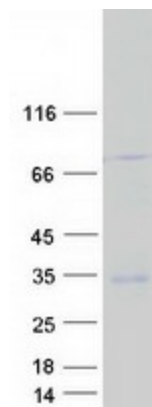
RefSeq ORF: 834

Synonyms: GPM6; M6A

Summary: Involved in neuronal differentiation, including differentiation and migration of neuronal stem cells. Plays a role in neuronal plasticity and is involved in neurite and filopodia outgrowth, filopodia motility and probably synapse formation. GPM6A-induced filopodia formation involves mitogen-activated protein kinase (MAPK) and Src signaling pathways. May be involved in neuronal NGF-dependent Ca(2+) influx. May be involved in regulation of endocytosis and intracellular trafficking of G-protein-coupled receptors (GPCRs); enhances internalization and recycling of mu-type opioid receptor.[UniProtKB/Swiss-Prot Function]

Protein Families: Transmembrane

Product images:



Coomassie blue staining of purified GPM6A protein (Cat# [TP305432]). The protein was produced from HEK293T cells transfected with GPM6A cDNA clone (Cat# [RC205432]) using MegaTran 2.0 (Cat# [TT210002]).