

## Product datasheet for TP305430M

### ERMN (NM\_020711) Human Recombinant Protein

#### Product data:

<b>Product Type:</b>	Recombinant Proteins
<b>Description:</b>	Recombinant protein of human ermin, ERM-like protein (ERMN), transcript variant 2, 100 µg
<b>Species:</b>	Human
<b>Expression Host:</b>	HEK293T
<b>Expression cDNA Clone or AA Sequence:</b>	>RC205430 protein sequence Red=Cloning site Green=Tags(s)

MTDVPATFTQAECSGDKPPENGQQTITKISEELTDVDSPLPHYRVEPSLEGALTKGSQEERRKLQGNMLL  
NSSMEDKMLKENPEEKLFIVHKAITDLSLQETSADMTFREGHQWEKIPLSGSNQEIIRRKERITEQPLK  
EEDEDRKNKGHQAAEIEWLGFRKPSQADMLHSHKDEEQKVVWDEIDDDDDNCNDEDEVRIEFKKKH  
EEVSQFKEEGDASEDSPLSSASSQAVTPDEQPTLGKKSISRNASRYNTISYRKIRKGNTKQRIDEFES  
MMHL

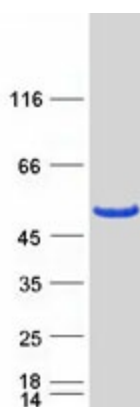
TRTRPLEQKLISEEDLAANDILDYKDDDDKV

<b>Tag:</b>	C-Myc/DDK
<b>Predicted MW:</b>	32.6 kDa
<b>Concentration:</b>	>0.05 µg/µL as determined by microplate BCA method
<b>Purity:</b>	> 80% as determined by SDS-PAGE and Coomassie blue staining
<b>Buffer:</b>	25 mM Tris-HCl, 100 mM glycine, pH 7.3, 10% glycerol
<b>Preparation:</b>	Recombinant protein was captured through anti-DDK affinity column followed by conventional chromatography steps.
<b>Note:</b>	For testing in cell culture applications, please filter before use. Note that you may experience some loss of protein during the filtration process.
<b>Storage:</b>	Store at -80°C.



<b>Stability:</b>	Stable for 12 months from the date of receipt of the product under proper storage and handling conditions. Avoid repeated freeze-thaw cycles.
<b>RefSeq:</b>	<a href="#">NP_065762</a>
<b>Locus ID:</b>	57471
<b>UniProt ID:</b>	<a href="#">Q8TAM6</a>
<b>RefSeq Size:</b>	3790
<b>Cytogenetics:</b>	2q24.1
<b>RefSeq ORF:</b>	852
<b>Synonyms:</b>	JN; KIAA1189
<b>Summary:</b>	Plays a role in cytoskeletal rearrangements during the late wrapping and/or compaction phases of myelinogenesis as well as in maintenance and stability of myelin sheath in the adult. May play an important role in late-stage oligodendroglia maturation, myelin/Ranvier node formation during CNS development, and in the maintenance and plasticity of related structures in the mature CNS (By similarity).[UniProtKB/Swiss-Prot Function]

### Product images:



Coomassie blue staining of purified ERMN protein (Cat# [TP305430]). The protein was produced from HEK293T cells transfected with ERMN cDNA clone (Cat# [RC205430]) using MegaTran 2.0 (Cat# [TT210002]).