

Product datasheet for **TP305429L**

AGXT2L1 (ETNPPL) (NM_031279) Human Recombinant Protein

Product data:

Product Type:	Recombinant Proteins
Description:	Recombinant protein of human alanine-glyoxylate aminotransferase 2-like 1 (AGXT2L1), 1 mg
Species:	Human
Expression Host:	HEK293T
Expression cDNA Clone or AA Sequence:	>RC205429 protein sequence Red =Cloning site Green =Tags(s)

MCELYSKRDTLGLRKKHIGPSCKVFFASDPIKIVRAQRQYMFDENGEQYLDCINNVAVHVGHCHPGVVAAA
LKQMELLNTNSRFLHDNIVEYAKRLSATLPEKLSVCYFTNSGSEANDLALRLARQFRGHQDVITLDHAYH
GHLSSLIEISPYKFQKGDVKKEFVHVAPTPTDTRGKYREDHADSASAYADEVKKIIEDAHNSGRKIAAF
IAESMQSCGGQIIPPAGYFQKVAEYVHGAGGVFIADEVQVGFGRVGGKHFWSFQMYGEDFVPDIVTMGKPM
GNGHPVACVTTKEIAEAFSSSGMEYFNTYGGNPVSCAVGLAVLDIENEDLQGNARVGNLYLTELKQ
KAKHTLIGDIRGIGLFIGIDLKVDHLKRTPATAEAQHIIYKMKEKRVLLSADGPHRNVLKIKPPMCFTEE
DAKFMVDQLDRILTVLEEAMGKTESVTSENTPCKTKMLKEAHIELLRDSTTDSKENPSRKRNGMCTDTH
SLLSKRLKT

TRTRPLEQKLISEEDLAANDILDYKDDDDKV

Tag:	C-Myc/DDK
Predicted MW:	55.5 kDa
Concentration:	>0.05 µg/µL as determined by microplate BCA method
Purity:	> 80% as determined by SDS-PAGE and Coomassie blue staining
Buffer:	25 mM Tris-HCl, 100 mM glycine, pH 7.3, 10% glycerol
Preparation:	Recombinant protein was captured through anti-DDK affinity column followed by conventional chromatography steps.
Note:	For testing in cell culture applications, please filter before use. Note that you may experience some loss of protein during the filtration process.
Storage:	Store at -80°C.
Stability:	Stable for 12 months from the date of receipt of the product under proper storage and handling conditions. Avoid repeated freeze-thaw cycles.



[View online »](#)

RefSeq: [NP_112569](#)

Locus ID: 64850

UniProt ID: [Q8TBG4](#)

RefSeq Size: 2133

Cytogenetics: 4q25

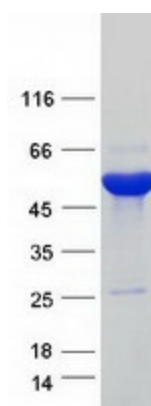
RefSeq ORF: 1497

Synonyms: AGXT2L1

Summary: Catalyzes the pyridoxal-phosphate-dependent breakdown of phosphoethanolamine, converting it to ammonia, inorganic phosphate and acetaldehyde.[UniProtKB/Swiss-Prot Function]

Protein Families: Druggable Genome

Product images:



Coomassie blue staining of purified ETNPPL protein (Cat# [TP305429]). The protein was produced from HEK293T cells transfected with ETNPPL cDNA clone (Cat# [RC205429]) using MegaTran 2.0 (Cat# [TT210002]).