

Product datasheet for **TP305380M**

Rb2 p130 (RBL2) (NM_005611) Human Recombinant Protein

Product data:

Product Type:	Recombinant Proteins
Description:	Purified recombinant protein of Homo sapiens retinoblastoma-like 2 (p130) (RBL2), 100 µg
Species:	Human
Expression Host:	HEK293T
Expression cDNA Clone or AA Sequence:	>RC205380 protein sequence Red =Cloning site Green =Tags(s)

MPSGGDQSPPPPPPPAAAASDEEEEDDGEAEDAAPPAESPTPQIQRFDELCSRLNMDEAARAEAWDSY
RSMSESYTLEGNDLHWLACALYVACRKSVPVTVSKGTVEGNYVSLTRILKCSEQSLIEFFNKMKKWEDMAN
LPPHFRERTERLERNFTVSAVIFKKYEPFQDIFKYPQEEQPRQRGRKQRQPCTVSEIFHFCWVLFYI
AKGNFPMISDDLVSYHLLLCALDLVYGNALQCSNRKELVNPVFKGLSEDFHAKDSKSSDPPCIIEKLC
SLHDGLVLEAKGIKEHFWKPYIRKLYEKLLKGKEENLTGFLEPGNFGESFKAINKAYEEVLSVGNLDE
RIFLGEDAEIEIGTLSRCLNAGSGTETAERVQMKNILQQHFDKSKALRISTPLTGVRYIKENSPCVTPVS
TATHSLRSLHTMLTGLRNAPSEKLEQILRRTCSDPTQAIANRLKEMFEIYSQHFQDDEDFSNCAKEIASK
HFRFAEMLYYKLVESVIEQEQKRLGDMDLGILEQDAFHRSLLACCLEVTFYSYKPPGNFPFITEIFDVP
LYHFYKVIIEVFIRAEDGLCREVVKHLNQIEEQILDHLAWKPESPLWEKIRDNENRVPTCEEVMPQPQLER
ADEICIASPLTPRRVTEVRADTGGLGRSITSPPTLYDRYSSPPASTTRRRLFVENDSPSDGGTPGRMPP
QPLVNAVVPVQNVSGETVSVTPVPGQTLVTMATATVTANNGQVTIPVQGIANENGGITFFPVQVNVGGQA
QAVTGSIQPLSAQALAGSLSSQVGTGTLQVPGQVAIQISPGGQQKQGGQSVTSSSNRPRKTSLSLFF
RKVYHLAAVRLRDLCAKLDISDELRRKIWTCFEFSIIQCPELMMDRHLDQLLMCAIYVMAKVTKEDKSFQ
NIMRCYRTQPQARSQVYRSVLIKGRKRRNSGSSDSRSHQNSPTELNKDRTSRDSPPVMRSSSTLPVPQP
SSAPPTPRTLGTANSMEEEERGLIQFYNNIYIKQIKTFAMKYSQANMDAPPLSPYFPVVRTGSPRIQL
SQNHVPYISPHKNETMLSPREKIFYFSNSPSKRLREINSMIHTGETPTKKRGILLEDGSESPAKRICPE
NHSALLRRLQDVANDRGS

TRTRPLEQKLISEEDLAANDILDYKDDDDKV

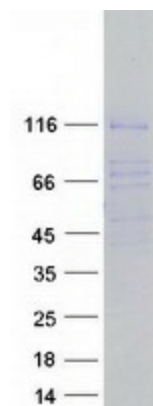
Tag:	C-Myc/DDK
Predicted MW:	128.2 kDa
Concentration:	>0.05 µg/µL as determined by microplate BCA method
Purity:	> 80% as determined by SDS-PAGE and Coomassie blue staining
Buffer:	25 mM Tris-HCl, 100 mM glycine, pH 7.3, 10% glycerol



[View online »](#)

Preparation:	Recombinant protein was captured through anti-DDK affinity column followed by conventional chromatography steps.
Note:	For testing in cell culture applications, please filter before use. Note that you may experience some loss of protein during the filtration process.
Storage:	Store at -80°C.
Stability:	Stable for 12 months from the date of receipt of the product under proper storage and handling conditions. Avoid repeated freeze-thaw cycles.
RefSeq:	NP_005602
Locus ID:	5934
UniProt ID:	Q08999
RefSeq Size:	4903
Cytogenetics:	16q12.2
RefSeq ORF:	3417
Synonyms:	P130; Rb2
Summary:	Key regulator of entry into cell division. Directly involved in heterochromatin formation by maintaining overall chromatin structure and, in particular, that of constitutive heterochromatin by stabilizing histone methylation. Recruits and targets histone methyltransferases KMT5B and KMT5C, leading to epigenetic transcriptional repression. Controls histone H4 'Lys-20' trimethylation. Probably acts as a transcription repressor by recruiting chromatin-modifying enzymes to promoters. Potent inhibitor of E2F-mediated trans-activation, associates preferentially with E2F5. Binds to cyclins A and E. Binds to and may be involved in the transforming capacity of the adenovirus E1A protein. May act as a tumor suppressor. [UniProtKB/Swiss-Prot Function]
Protein Families:	Druggable Genome, Transcription Factors
Protein Pathways:	Cell cycle, TGF-beta signaling pathway

Product images:



Coomassie blue staining of purified RBL2 protein (Cat# [TP305380]). The protein was produced from HEK293T cells transfected with RBL2 cDNA clone (Cat# [RC205380]) using MegaTran 2.0 (Cat# [TT210002]).