

## Product datasheet for **TP305380L**

### Rb2 p130 (RBL2) (NM\_005611) Human Recombinant Protein

#### Product data:

**Product Type:** Recombinant Proteins  
**Description:** Purified recombinant protein of Homo sapiens retinoblastoma-like 2 (p130) (RBL2), 1 mg  
**Species:** Human  
**Expression Host:** HEK293T  
**Expression cDNA Clone or AA Sequence:** >RC205380 protein sequence  
Red=Cloning site Green=Tags(s)

MPSGGDQSPPPPPPPAAAASDEEEEDDGEAEDAAPPAESPTPQIQRFDELCSRLNMDEAARAEAWDSY  
RSMSESYTLEGNDLHWLACALYVACRKSVPVTVSKGTVEGNYVSLTRILKCSEQSLIEFFNKMKKWEDMAN  
LPPHFRERTERLERNFTVSAVIFKKYEPIFQDIFKYPQEEQPRQRGRKQRRQPCTVSEIFHFCWVLFYI  
AKGNFPMISDDLVSYHLLLCALDLVYGNALQCSNRKELVNPVNFKGLSEDFHAKDSKSSDPPCIEKLC  
SLHDGLVLEAKGIKEHFWKPYIRKLYEKLLKGKEENLTGFLEPGNFGESFKAINKAYEEVLSVGNLDE  
RIFLGEDAEIEIGTLSRCLNAGSGTETAERVQMKNILQQHFDKSKALRISTPLTGVRYIKENSPCVTPVS  
TATHSLRSLHTMLTGLRNAPSEKLEQILRTRCSRDPQAIANRLKEMFEIYSQHFQDDEDFSNCAKEIASK  
HFRFAEMLYYKLVESVIEQEQKRLGDMDLGILEQDAFHRSLLACCLEVTFYSYKPPGNFPFITEIFDVP  
LYHFYKVIEWFIRAEDGLCREVVKHLNQIEEQILDHLAWKPESPLWEKIRDNENRVPTCEEVMPQPQLER  
ADEICIASPLTPRRVTEVRADTGGLGRSITSPPTLYDRYSSPPASTTRRRLFVENDSPSDGGTPGRMPP  
QPLVNAVVPVQNVSGETVSVTPVPGQTLVTMATATVTANNGQTVTIPVQGIANENGGITFFPVQVNVGGQA  
QAVTGSIQPLSAQALAGSLSSQVGTGTLQVPGQVAIQISPGGQQKQGGQSVTSSSNRPRKTSLSLFF  
RKVYHLAAVRLRDLCAKLDISDELRRKIWTCFEFSIIQCPELMMDRHLDQLLMCAIYVMAKVTKEDKSFQ  
NIMRCYRTQPQARSQVYRSVLIKGKRKRRNSGSSDSRSHQNSPTELNKDRTSRDSSPVMRSSSTLPVPQP  
SSAPPTPRTLGTANSMEEEERGLIQFYNNIYIKQIKTFAMKYSQANMDAPPLSPYFPVVRTGSPRIQL  
SQNHVPYISPHKNETMLSPREKIFYFSNSPSKRLREINSMIHTGETPTKKRGILLEDGSESPAKRICPE  
NHSALLRRLQDVANDRGS

TRTRPLEQKLISEEDLAANDILDYKDDDDKV

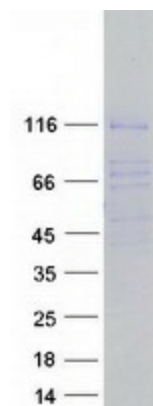
**Tag:** C-Myc/DDK  
**Predicted MW:** 128.2 kDa  
**Concentration:** >0.05 µg/µL as determined by microplate BCA method  
**Purity:** > 80% as determined by SDS-PAGE and Coomassie blue staining  
**Buffer:** 25 mM Tris-HCl, 100 mM glycine, pH 7.3, 10% glycerol



[View online »](#)

<b>Preparation:</b>	Recombinant protein was captured through anti-DDK affinity column followed by conventional chromatography steps.
<b>Note:</b>	For testing in cell culture applications, please filter before use. Note that you may experience some loss of protein during the filtration process.
<b>Storage:</b>	Store at -80°C.
<b>Stability:</b>	Stable for 12 months from the date of receipt of the product under proper storage and handling conditions. Avoid repeated freeze-thaw cycles.
<b>RefSeq:</b>	<a href="#">NP_005602</a>
<b>Locus ID:</b>	5934
<b>UniProt ID:</b>	<a href="#">Q08999</a>
<b>RefSeq Size:</b>	4903
<b>Cytogenetics:</b>	16q12.2
<b>RefSeq ORF:</b>	3417
<b>Synonyms:</b>	P130; Rb2
<b>Summary:</b>	Key regulator of entry into cell division. Directly involved in heterochromatin formation by maintaining overall chromatin structure and, in particular, that of constitutive heterochromatin by stabilizing histone methylation. Recruits and targets histone methyltransferases KMT5B and KMT5C, leading to epigenetic transcriptional repression. Controls histone H4 'Lys-20' trimethylation. Probably acts as a transcription repressor by recruiting chromatin-modifying enzymes to promoters. Potent inhibitor of E2F-mediated trans-activation, associates preferentially with E2F5. Binds to cyclins A and E. Binds to and may be involved in the transforming capacity of the adenovirus E1A protein. May act as a tumor suppressor. [UniProtKB/Swiss-Prot Function]
<b>Protein Families:</b>	Druggable Genome, Transcription Factors
<b>Protein Pathways:</b>	Cell cycle, TGF-beta signaling pathway

### Product images:



Coomassie blue staining of purified RBL2 protein (Cat# [TP305380]). The protein was produced from HEK293T cells transfected with RBL2 cDNA clone (Cat# [RC205380]) using MegaTran 2.0 (Cat# [TT210002]).