

Product datasheet for **TP305373L**

clAP1 (BIRC2) (NM_001166) Human Recombinant Protein

Product data:

Product Type: Recombinant Proteins
Description: Recombinant protein of human baculoviral IAP repeat-containing 2 (BIRC2), 1 mg
Species: Human
Expression Host: HEK293T
Expression cDNA Clone or AA Sequence: >RC205373 protein sequence
Red=Cloning site **Green**=Tags(s)

MHKTASQRLFPGPSYQNIKSIMEDSTILSDWTNSNKQKMKYDFSCELYRMSTYSTFPAGVPVSLARA
GFYYTGVNDKVKCFCCGLMLDNWKLGDSPIQKHKQLYPCSFQNLVLSASLSTKNTSPMRNSFAHLSL
PTLEHSSLFSGSYSSLSPNPLNSRAVEDISSRTNPYSYAMSTEEARFLTYHMWPLTFLSPSELAGFVY
YIGPGDRVACFACGGKLSNWEPKDDAMSEHRRHFPNCPFLENSLETLRFSISNLSMQTHAARMRTFMYWP
SSVPVQPEQLASAGFYVGRNDDVKCFCCDGLRCWESGDDPWVEHAKWFPRCEFLIRMKGQEFVDEIQG
RYPHLLLEQLLSTSDTTGEENADPPIIHFGPGESSEDAVMMNTPVVKSALEMGFNRDLVKQTVQSKILTT
GENYKTVNDIVSALLNAEDEKREEEKEKQAEEMASDDLIRKKNRMALFQQLTCVLPILDNLLKANVINK
QEHDIIKQKTQIPLQARELIDTILVKGNAANIFKNCLKEIDSTLYKNLFDKMKYIPTEDVSGLSLEE
QLRRLQEERTCKVCMDEKESVVFIPCGHLVVCQECAPSLRKPCICRGIKGTVRTFLS

TRTRPLEQKLISEEDLAANDILDYKDDDDKV

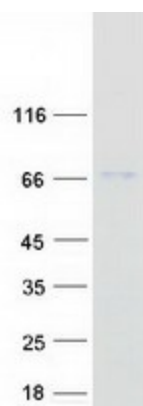
Tag: C-Myc/DDK
Predicted MW: 69.7 kDa
Concentration: >0.05 µg/µL as determined by microplate BCA method
Purity: > 80% as determined by SDS-PAGE and Coomassie blue staining
Buffer: 25 mM Tris-HCl, 100 mM glycine, pH 7.3, 10% glycerol
Preparation: Recombinant protein was captured through anti-DDK affinity column followed by conventional chromatography steps.
Note: For testing in cell culture applications, please filter before use. Note that you may experience some loss of protein during the filtration process.
Storage: Store at -80°C.



[View online »](#)

| | |
|--------------------------|---|
| Stability: | Stable for 12 months from the date of receipt of the product under proper storage and handling conditions. Avoid repeated freeze-thaw cycles. |
| RefSeq: | NP_001157 |
| Locus ID: | 329 |
| UniProt ID: | Q13490 |
| RefSeq Size: | 3813 |
| Cytogenetics: | 11q22.2 |
| RefSeq ORF: | 1854 |
| Synonyms: | API1; c-IAP1; cIAP1; Hiap-2; HIAP2; MIHB; RNF48 |
| Summary: | The protein encoded by this gene is a member of a family of proteins that inhibits apoptosis by binding to tumor necrosis factor receptor-associated factors TRAF1 and TRAF2, probably by interfering with activation of ICE-like proteases. This encoded protein inhibits apoptosis induced by serum deprivation and menadione, a potent inducer of free radicals. Alternatively spliced transcript variants encoding different isoforms have been found for this gene. [provided by RefSeq, Jan 2012] |
| Protein Families: | Druggable Genome |
| Protein Pathways: | Apoptosis, Focal adhesion, NOD-like receptor signaling pathway, Pathways in cancer, Small cell lung cancer, Ubiquitin mediated proteolysis |

Product images:



Coomassie blue staining of purified BIRC2 protein (Cat# [TP305373]). The protein was produced from HEK293T cells transfected with BIRC2 cDNA clone (Cat# [RC205373]) using MegaTran 2.0 (Cat# [TT210002]).