

## Product datasheet for **TP305371L**

### Neuronal membrane glycoprotein M6 a (GPM6A) (NM\_201591) Human Recombinant Protein

#### Product data:

**Product Type:** Recombinant Proteins

**Description:** Recombinant protein of human glycoprotein M6A (GPM6A), transcript variant 2, 1 mg

**Species:** Human

**Expression Host:** HEK293T

**Expression cDNA Clone or AA Sequence:** >RC205371 protein sequence  
**Red**=Cloning site **Green**=Tags(s)

MEENMEEGQTQKGCFECCIKCLGGIPYASLIATILLYAGVALFCGCGHEALSGTVNILQTYFEMARTAGD  
TLDVFTMIDIFKYVIYGIAAAFFVYGILLMVEGFFTTGAIKDLYGDFKITTCGRCVSAWFIMLTFLMLA  
WLGVTAFTSLPVYMYFNLWTICRNTTLVEGANLCLDLRQFGIVTIGEEKKICTVSENFMRMCESTELNMT  
FHLFIVALAGAGAAVIAMVHYLMVLSANWAYVKDACRMQKYEDIKSKEEQELHDIHSTRSKERLNAYT

**TRTRPLEQKLISEEDLAANDILDYKDDDDKV**

**Tag:** C-Myc/DDK

**Predicted MW:** 31 kDa

**Concentration:** >0.05 µg/µL as determined by microplate BCA method

**Purity:** > 80% as determined by SDS-PAGE and Coomassie blue staining

**Buffer:** 25 mM Tris-HCl, 100 mM glycine, pH 7.3, 10% glycerol

**Preparation:** Recombinant protein was captured through anti-DDK affinity column followed by conventional chromatography steps.

**Note:** For testing in cell culture applications, please filter before use. Note that you may experience some loss of protein during the filtration process.

**Storage:** Store at -80°C.

**Stability:** Stable for 12 months from the date of receipt of the product under proper storage and handling conditions. Avoid repeated freeze-thaw cycles.

**RefSeq:** [NP\\_963885](#)

**Locus ID:** 2823

**UniProt ID:** [P51674](#)



[View online »](#)

RefSeq Size: 3697

Cytogenetics: 4q34.2

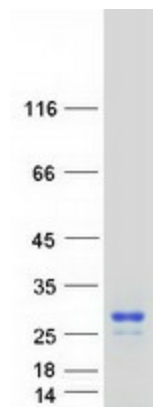
RefSeq ORF: 834

Synonyms: GPM6; M6A

**Summary:** Involved in neuronal differentiation, including differentiation and migration of neuronal stem cells. Plays a role in neuronal plasticity and is involved in neurite and filopodia outgrowth, filopodia motility and probably synapse formation. GPM6A-induced filopodia formation involves mitogen-activated protein kinase (MAPK) and Src signaling pathways. May be involved in neuronal NGF-dependent Ca<sup>2+</sup> influx. May be involved in regulation of endocytosis and intracellular trafficking of G-protein-coupled receptors (GPCRs); enhances internalization and recycling of mu-type opioid receptor.[UniProtKB/Swiss-Prot Function]

**Protein Families:** Transmembrane

### Product images:



Coomassie blue staining of purified GPM6A protein (Cat# [TP305371]). The protein was produced from HEK293T cells transfected with GPM6A cDNA clone (Cat# [RC205371]) using MegaTran 2.0 (Cat# [TT210002]).