

Product datasheet for **TP305370**

Calponin (CNN1) (NM_001299) Human Recombinant Protein

Product data:

Product Type:	Recombinant Proteins
Description:	Recombinant protein of human calponin 1, basic, smooth muscle (CNN1), 20 µg
Species:	Human
Expression Host:	HEK293T
Expression cDNA	>RC205370 protein sequence
Clone or AA Sequence:	Red=Cloning site Green=Tags(s)

MSSAHFNRRGPAYGLSAEVKNKLAQKYDHRQREQLREWIEGVTGRRIGNNFMDGLKDGIIICEFINKLQPG
SVKKINESTQNWHQLENIGNFIKAITKYGVKPHDIFEANDLFENTNHTQVQSTLLALASMAKTKGNKVV
GVKYAEKQERKFEPGKLREGRNIIQLQMGTKNFASQGGMTAYGTRRHLYDPKLGTDQPLDQATISLQMG
NKGASQAGMTAPGTRKQIFEPGLGMEHCDTLNVSLQMGSNKGASQGMTVYGLPRQVYDPKYCLTPEYPE
LGEPAHNHHAHNYNSA

TRTRPLEQKLISEEDLAANDILDYKDDDDKV

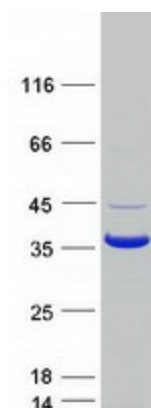
Tag:	C-Myc/DDK
Predicted MW:	33 kDa
Concentration:	>0.05 µg/µL as determined by microplate BCA method
Purity:	> 80% as determined by SDS-PAGE and Coomassie blue staining
Buffer:	25 mM Tris-HCl, 100 mM glycine, pH 7.3, 10% glycerol
Preparation:	Recombinant protein was captured through anti-DDK affinity column followed by conventional chromatography steps.
Note:	For testing in cell culture applications, please filter before use. Note that you may experience some loss of protein during the filtration process.
Storage:	Store at -80°C.
Stability:	Stable for 12 months from the date of receipt of the product under proper storage and handling conditions. Avoid repeated freeze-thaw cycles.
RefSeq:	<u>NP_001290</u>
Locus ID:	1264



[View online »](#)

UniProt ID:	P51911 , V9HWA5
RefSeq Size:	1599
Cytogenetics:	19p13.2
RefSeq ORF:	891
Synonyms:	HEL-S-14; Sm-Calp; SMCC
Summary:	Thin filament-associated protein that is implicated in the regulation and modulation of smooth muscle contraction. It is capable of binding to actin, calmodulin, troponin C and tropomyosin. The interaction of calponin with actin inhibits the actomyosin Mg-ATPase activity (By similarity). [UniProtKB/Swiss-Prot Function]

Product images:



Coomassie blue staining of purified CNN1 protein (Cat# TP305370). The protein was produced from HEK293T cells transfected with CNN1 cDNA clone (Cat# [RC205370]) using MegaTran 2.0 (Cat# [TT210002]).