

Product datasheet for **TP305367M**

RIT2 (NM_002930) Human Recombinant Protein

Product data:

Product Type: Recombinant Proteins

Description: Recombinant protein of human Ras-like without CAAX 2 (RIT2), 100 µg

Species: Human

Expression Host: HEK293T

Expression cDNA Clone or AA Sequence: >RC205367 protein sequence
Red=Cloning site **Green**=Tags(s)

MEVENEASCSPGSASGGSSREYKVVMLGAGGVGKSAMTMQFISHQFPDYHDPTIEDAYKTQVRIDNEPAYL
DILDTAGQAEFTAMREQYMRGGEGFIICYSVTDRQSFQEAAKFELIFQVRHTYEIPLVLVGNKIDLEQF
RQVSTEEGLSLAQEYNCGFFETSAAALRFCIDDAFHGLVREIRKKESMPSLMEKKLKRKDCWLKGLKGLK
KKRENMT

TRTRPLEQKLISEEDLAANDILDYKDDDDKV

Tag: C-Myc/DDK

Predicted MW: 24.5 kDa

Concentration: >0.05 µg/µL as determined by microplate BCA method

Purity: > 80% as determined by SDS-PAGE and Coomassie blue staining

Buffer: 25 mM Tris-HCl, 100 mM glycine, pH 7.3, 10% glycerol

Preparation: Recombinant protein was captured through anti-DDK affinity column followed by conventional chromatography steps.

Note: For testing in cell culture applications, please filter before use. Note that you may experience some loss of protein during the filtration process.

Storage: Store at -80°C.

Stability: Stable for 12 months from the date of receipt of the product under proper storage and handling conditions. Avoid repeated freeze-thaw cycles.

RefSeq: [NP_002921](#)

Locus ID: 6014

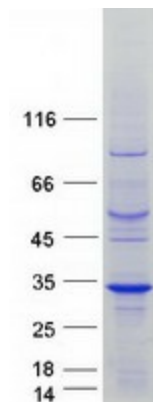
UniProt ID: [Q99578](#)



[View online >](#)

| | |
|---------------|---|
| RefSeq Size: | 1102 |
| Cytogenetics: | 18q12.3 |
| RefSeq ORF: | 651 |
| Synonyms: | RIBA; RIN; ROC2 |
| Summary: | RIN belongs to the RAS (HRAS; MIM 190020) superfamily of small GTPases (Shao et al., 1999 [PubMed 10545207]).[supplied by OMIM, Mar 2008] |

Product images:



Coomassie blue staining of purified RIT2 protein (Cat# [TP305367]). The protein was produced from HEK293T cells transfected with RIT2 cDNA clone (Cat# [RC205367]) using MegaTran 2.0 (Cat# [TT210002]).