

## Product datasheet for **TP305367**

### RIT2 (NM\_002930) Human Recombinant Protein

#### Product data:

**Product Type:** Recombinant Proteins

**Description:** Recombinant protein of human Ras-like without CAAX 2 (RIT2), 20 µg

**Species:** Human

**Expression Host:** HEK293T

**Expression cDNA Clone or AA Sequence:** >RC205367 protein sequence  
**Red**=Cloning site **Green**=Tags(s)

MEVENEASCSPGSASGGSREYKVVMLGAGGVGKSAMTMQFISHQFPDYHDPTIEDAYKTQVRIDNEPAYL  
DILDTAGQAEFTAMREQYMRGGEGFIICYSVTDRQSFQEAAKFKELIFQVRHTYEIPLVLVGNKIDLEQF  
RQVSTEEGLSLAQEYNCGFFETSAAALRFCIDDAFHGLVREIRKKESMPSLMEKKLKRKDCWLWKKLKGSLK  
KKRENMT

**TR**TRPLEQKLISEEDLAANDILDYKDDDDKV

**Tag:** C-Myc/DDK

**Predicted MW:** 24.5 kDa

**Concentration:** >0.05 µg/µL as determined by microplate BCA method

**Purity:** > 80% as determined by SDS-PAGE and Coomassie blue staining

**Buffer:** 25 mM Tris-HCl, 100 mM glycine, pH 7.3, 10% glycerol

**Preparation:** Recombinant protein was captured through anti-DDK affinity column followed by conventional chromatography steps.

**Note:** For testing in cell culture applications, please filter before use. Note that you may experience some loss of protein during the filtration process.

**Storage:** Store at -80°C.

**Stability:** Stable for 12 months from the date of receipt of the product under proper storage and handling conditions. Avoid repeated freeze-thaw cycles.

**RefSeq:** [NP\\_002921](#)

**Locus ID:** 6014

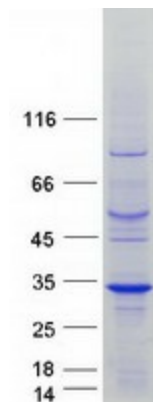
**UniProt ID:** [Q99578](#)



[View online »](#)

RefSeq Size:	1102
Cytogenetics:	18q12.3
RefSeq ORF:	651
Synonyms:	RIBA; RIN; ROC2
Summary:	RIN belongs to the RAS (HRAS; MIM 190020) superfamily of small GTPases (Shao et al., 1999 [PubMed 10545207]).[supplied by OMIM, Mar 2008]

### Product images:



Coomassie blue staining of purified RIT2 protein (Cat# TP305367). The protein was produced from HEK293T cells transfected with RIT2 cDNA clone (Cat# [RC205367]) using MegaTran 2.0 (Cat# [TT210002]).