

## Product datasheet for **TP305362L**

### **GAPDHS (NM\_014364) Human Recombinant Protein**

#### **Product data:**

<b>Product Type:</b>	Recombinant Proteins
<b>Description:</b>	Recombinant protein of human glyceraldehyde-3-phosphate dehydrogenase, spermatogenic (GAPDHS), 1 mg
<b>Species:</b>	Human
<b>Expression Host:</b>	HEK293T
<b>Expression cDNA Clone or AA Sequence:</b>	>RC205362 protein sequence <b>Red</b> =Cloning site <b>Green</b> =Tags(s)

MSKRDIVLTNVTVVQLLRQPCPVTRAPPPPEPKAEVEPQQPEPTPVREEIKPPPPPLPPHPATPPPKMV  
SVARELTVGINGFGRIGRLVLRACMEKGVKVVAVNDPFIDPEYMVYMFKYDSTHGKRYKGSVEFRNGQLW  
DNHEISVYQCKEPKQIPWRAVGSPYVVESTGVYLSIQAASDHISAGAQRVVISAPSPDAPMFVMGVNEND  
YNP GSMNIVSNASCTTNCLAPLAKVIHERFGIVEGLMTTVHSYTATQKTVDGSPRKAWRDGRGAHQNIIP  
ASTGAAKAVTKVIPELKGKLTGMAFRVPTPDVSVVDLTCRLAQPAPYSAIKEAVKAAAKGPMAGILAYTE  
DEVVSTDFLGDTHSSIFDAKAGIALNDNFVKLISWYDNEYGYSHRVVDLLRYMFSRDK

**SGPTRTRPLEQKLISEEDLAANDILDYKDDDDKV**

<b>Tag:</b>	C-Myc/DDK
<b>Predicted MW:</b>	44.3 kDa
<b>Concentration:</b>	>0.05 µg/µL as determined by microplate BCA method
<b>Purity:</b>	> 80% as determined by SDS-PAGE and Coomassie blue staining
<b>Buffer:</b>	25 mM Tris-HCl, 100 mM glycine, pH 7.3, 10% glycerol
<b>Preparation:</b>	Recombinant protein was captured through anti-DDK affinity column followed by conventional chromatography steps.
<b>Note:</b>	For testing in cell culture applications, please filter before use. Note that you may experience some loss of protein during the filtration process.
<b>Storage:</b>	Store at -80°C.
<b>Stability:</b>	Stable for 12 months from the date of receipt of the product under proper storage and handling conditions. Avoid repeated freeze-thaw cycles.
<b>RefSeq:</b>	<u><a href="#">NP_055179</a></u>



[View online »](#)

Locus ID: 26330

UniProt ID: [O14556](#), [A0A0K0K1K1](#)

RefSeq Size: 1492

Cytogenetics: 19q13.12

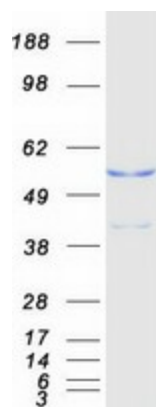
RefSeq ORF: 1224

Synonyms: GAPD2; GAPDH-2; GAPDS; HEL-S-278; HSD-35

**Summary:** This gene encodes a protein belonging to the glyceraldehyde-3-phosphate dehydrogenase family of enzymes that play an important role in carbohydrate metabolism. Like its somatic cell counterpart, this sperm-specific enzyme functions in a nicotinamide adenine dinucleotide-dependent manner to remove hydrogen and add phosphate to glyceraldehyde 3-phosphate to form 1,3-diphosphoglycerate. During spermiogenesis, this enzyme may play an important role in regulating the switch between different energy-producing pathways, and it is required for sperm motility and male fertility. [provided by RefSeq, Jul 2008]

**Protein Families:** Druggable Genome

### Product images:



Coomassie blue staining of purified GAPDHS protein (Cat# [TP305362]). The protein was produced from HEK293T cells transfected with GAPDHS cDNA clone (Cat# [RC205362]) using MegaTran 2.0 (Cat# [TT210002]).