

## Product datasheet for **TP305359M**

### YPEL1 (NM\_013313) Human Recombinant Protein

#### Product data:

Product Type:	Recombinant Proteins
Description:	Recombinant protein of human yippee-like 1 (Drosophila) (YPEL1), 100 µg
Species:	Human
Expression Host:	HEK293T
Expression cDNA Clone or AA Sequence:	>RC205359 protein sequence <b>Red</b> =Cloning site <b>Green</b> =Tags(s)
	MVKMTKSKTFQAYLPNCHRTYSCIHCRAHLANHDELISKSFQGSQGRAYLFNSVWNVGCGPAEERVLLTG LHAVADIYCENCKTTLGWKYEHAFAESSQKYKEGKFIIELAHMIKDNGWE
	<b>TRTRPLEQKLISEEDLAANDILDYKDDDDKV</b>
Tag:	C-Myc/DDK
Predicted MW:	13.4 kDa
Concentration:	>0.05 µg/µL as determined by microplate BCA method
Purity:	> 80% as determined by SDS-PAGE and Coomassie blue staining
Buffer:	25 mM Tris-HCl, 100 mM glycine, pH 7.3, 10% glycerol
Preparation:	Recombinant protein was captured through anti-DDK affinity column followed by conventional chromatography steps.
Note:	For testing in cell culture applications, please filter before use. Note that you may experience some loss of protein during the filtration process.
Storage:	Store at -80°C.
Stability:	Stable for 12 months from the date of receipt of the product under proper storage and handling conditions. Avoid repeated freeze-thaw cycles.
RefSeq:	<a href="#">NP_037445</a>
Locus ID:	29799
UniProt ID:	<a href="#">Q60688</a>
RefSeq Size:	4301
Cytogenetics:	22q11.21-q11.22



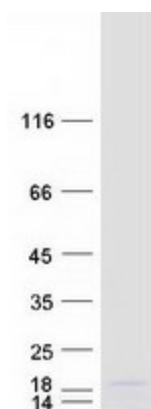
[View online »](#)

RefSeq ORF: 357

Synonyms: FKSG3

Summary: This gene is located in the region associated with DiGeorge syndrome on chromosome 22. The encoded protein localizes to the centrosome and nucleolus and may play a role in the regulation of cell division. [provided by RefSeq, Feb 2015]

### Product images:



Coomassie blue staining of purified YPEL1 protein (Cat# [TP305359]). The protein was produced from HEK293T cells transfected with YPEL1 cDNA clone (Cat# [RC205359]) using MegaTran 2.0 (Cat# [TT210002]).