

Product datasheet for **TP305359**

YPEL1 (NM_013313) Human Recombinant Protein

Product data:

Product Type: Recombinant Proteins

Description: Recombinant protein of human yippee-like 1 (Drosophila) (YPEL1), 20 µg

Species: Human

Expression Host: HEK293T

**Expression cDNA Clone
or AA Sequence:** >RC205359 protein sequence
Red=Cloning site **Green**=Tags(s)

MVKMTKSKTFQAYLPNCHRTYSCIHCRAHLANHDELISKSFQGSQGRAYLFNSVWNVGCGPAEERVLLTG
LHAVADIYCENCKTTLGWKYEHAFAESSQKYKEGKFIIELAHMIKDNGWE

TRTRPLEQKLISEEDLAANDILDYKDDDDKV

Tag: C-Myc/DDK

Predicted MW: 13.4 kDa

Concentration: >0.05 µg/µL as determined by microplate BCA method

Purity: > 80% as determined by SDS-PAGE and Coomassie blue staining

Buffer: 25 mM Tris-HCl, 100 mM glycine, pH 7.3, 10% glycerol

Preparation: Recombinant protein was captured through anti-DDK affinity column followed by conventional chromatography steps.

Note: For testing in cell culture applications, please filter before use. Note that you may experience some loss of protein during the filtration process.

Storage: Store at -80°C.

Stability: Stable for 12 months from the date of receipt of the product under proper storage and handling conditions. Avoid repeated freeze-thaw cycles.

RefSeq: [NP_037445](#)

Locus ID: 29799

UniProt ID: [O60688](#)

RefSeq Size: 4301

Cytogenetics: 22q11.21-q11.22



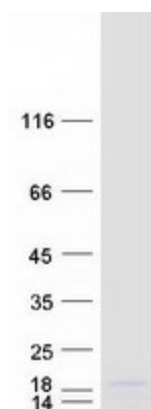
[View online »](#)

RefSeq ORF: 357

Synonyms: FKSG3

Summary: This gene is located in the region associated with DiGeorge syndrome on chromosome 22. The encoded protein localizes to the centrosome and nucleolus and may play a role in the regulation of cell division. [provided by RefSeq, Feb 2015]

Product images:



Coomassie blue staining of purified YPEL1 protein (Cat# TP305359). The protein was produced from HEK293T cells transfected with YPEL1 cDNA clone (Cat# [RC205359]) using MegaTran 2.0 (Cat# [TT210002]).