

## Product datasheet for **TP305354M**

### GLE1 (NM\_001003722) Human Recombinant Protein

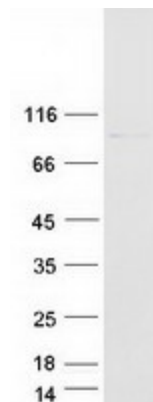
#### Product data:

Product Type:	Recombinant Proteins
Description:	Recombinant protein of human GLE1 RNA export mediator homolog (yeast) (GLE1), transcript variant 1, 100 µg
Species:	Human
Expression Host:	HEK293T
Expression cDNA Clone or AA Sequence:	>RC205354 protein sequence <b>Red</b> =Cloning site <b>Green</b> =Tags(s)  MPSEGRCWETLKALRSSDKGRLCYYRDWLLRREDVLEECMSLPKLSSYSGWVVEHVLPHMQENQPLSET S PSSTSASALDQPSFVPKSPDASSAFSPASPATPNGTKGKDESQHTESMVLQSSRGIKVEDCVRMYELVHR MKGTEGLRLWQEEQERKVQALSEMASEQLKRFDEWKELQHKFQDLREVMEKSSREALGHQEKLKAE HR HRAKILNLKLREAEQQRVKQAEQERLRKEEGQIRLRALYALQEEMQLQSQQLDASEQHKALLKVDLAAFQ TRGNQLCSLISGIIRASSESYPTAESQAEALREMRDLLMNLGQEITRACEDKRRQDEEEAQVKLQE AQMQQGPEAHKEPPAPSQGPQGGKQNEIDLQVKVDITMQWYQQLQDASMQCVLTFEGLTNSKDSQAK KIKM DLQKAATIPVSQISTIAGSKLKEIFDKIHSLLSGKPVQSGGRSVSVTLNPQGLDFVQYKLAEFVKQGEE EVASHHEAAFPPIAVVASGIWELHPRVGDILAHHLHKCPYSVPFYPTFKEGMALEDYQRMGLGYQVKDSKV EQQDNFLKRMSGMIRLYAAIIQLRWPGNQQEIHHPHGLNHGWRWLAQILNMEPLSDVTATLLDFDFLEVC G NALMKQYQVQFWKMLILIKEDYFPRIEAITSSGQMGSFIRLKQFLEKCLQHKDIPVPKGF LTSSFWRS  <b>TRTRPLEQKLISEEDLAANDILDYKDDDDKV</b>
Tag:	C-Myc/DDK
Predicted MW:	79.7 kDa
Concentration:	>0.05 µg/µL as determined by microplate BCA method
Purity:	> 80% as determined by SDS-PAGE and Coomassie blue staining
Buffer:	25 mM Tris-HCl, 100 mM glycine, pH 7.3, 10% glycerol


[View online »](#)

<b>Preparation:</b>	Recombinant protein was captured through anti-DDK affinity column followed by conventional chromatography steps.
<b>Note:</b>	For testing in cell culture applications, please filter before use. Note that you may experience some loss of protein during the filtration process.
<b>Storage:</b>	Store at -80°C.
<b>Stability:</b>	Stable for 12 months from the date of receipt of the product under proper storage and handling conditions. Avoid repeated freeze-thaw cycles.
<b>RefSeq:</b>	<u><a href="#">NP_001003722</a></u>
<b>Locus ID:</b>	2733
<b>UniProt ID:</b>	<u><a href="#">Q53GS7</a></u>
<b>RefSeq Size:</b>	3350
<b>Cytogenetics:</b>	9q34.11
<b>RefSeq ORF:</b>	2094
<b>Synonyms:</b>	CAAHC; CAAHD; GLE1L; hGLE1; LCCS; LCCS1
<b>Summary:</b>	This gene encodes a predicted 75-kDa polypeptide with high sequence and structure homology to yeast Gle1p, which is nuclear protein with a leucine-rich nuclear export sequence essential for poly(A)+RNA export. Inhibition of human GLE1L by microinjection of antibodies against GLE1L in HeLa cells resulted in inhibition of poly(A)+RNA export. Immunofluorescence studies show that GLE1L is localized at the nuclear pore complexes. This localization suggests that GLE1L may act at a terminal step in the export of mature RNA messages to the cytoplasm. Two alternatively spliced transcript variants encoding different isoforms have been found for this gene. [provided by RefSeq, Jul 2008]

## Product images:



Coomassie blue staining of purified GLE1 protein (Cat# [TP305354]). The protein was produced from HEK293T cells transfected with GLE1 cDNA clone (Cat# [RC205354]) using MegaTran 2.0 (Cat# [TT210002]).