

Product datasheet for **TP305347M**

KLHL2 (NM_007246) Human Recombinant Protein

Product data:

Product Type: Recombinant Proteins

Description: Recombinant protein of human kelch-like 2, Mayven (Drosophila) (KLHL2), 100 µg

Species: Human

Expression Host: HEK293T

Expression cDNA >RC205347 protein sequence

Clone or AA Red=Cloning site Green=Tags(s)

Sequence:

METPPLPACTKQGHQKPLDSKDDNTEKHCPVTVNPWHMCKAFKVMNELRSQNLCDVTIVAEDMEISAH
RVLAACSPYFHAMFTGEMSESRAKRVRIKEVDGWTLRMLIDYVYTAIEIQVTEENVQVLLPAAGLLQLQD
VKKTCCEFLESQ LHPVNCLGIRAFADMHACTDLLNKANTYAEQHFADV LSEEFNLGIEQVCSLISSDK
LTISSEKVF EAVIAWVNHDKDVRQEFMARLMEHVRLPLLPREYLVQRVEEALVKNSSACKDY LIEAMK
YHLLPTEQRILMKS VRTRLRTPMNLPKLMVVVGGQAPKAIRSV ECVDFKEERWHQVAELPSRRCRAGM VY
MAGLVFAVGGFNGSLRVRTVDSYDPVKDQWTSVANMRDRRSTLGA AVLNGLLYAVGGFDGSTGLSSVEAY
NIKSNEWFHVAPMNTRRSSVGVGVGGLLYAVGGYDVASRQCLSTVECYNATTNEWTYIAEMSTRRSGAG
VGVLNNLLYAVGGHDGPLVRKSVEVYDPTTNAWRQVADMMCMRRNAGVCAVNGLLYVVGDDGSCNLASV
EYYPNTTDKWTVSSCMSTGRSYAGVTVIDKRL

TRTRPLEQKLISEEDLAANDILDYKDDDDKV

Tag: C-Myc/DDK

Predicted MW: 65.8 kDa

Concentration: >0.05 µg/µL as determined by microplate BCA method

Purity: > 80% as determined by SDS-PAGE and Coomassie blue staining

Buffer: 25 mM Tris-HCl, 100 mM glycine, pH 7.3, 10% glycerol

Preparation: Recombinant protein was captured through anti-DDK affinity column followed by conventional chromatography steps.

Note: For testing in cell culture applications, please filter before use. Note that you may experience some loss of protein during the filtration process.

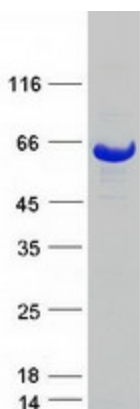
Storage: Store at -80°C.



[View online »](#)

Stability:	Stable for 12 months from the date of receipt of the product under proper storage and handling conditions. Avoid repeated freeze-thaw cycles.
RefSeq:	NP_009177
Locus ID:	11275
UniProt ID:	O95198
RefSeq Size:	3137
Cytogenetics:	4q32.3
RefSeq ORF:	1779
Synonyms:	ABP-KELCH; MAV; MAYVEN
Summary:	Component of a cullin-RING-based BCR (BTB-CUL3-RBX1) E3 ubiquitin-protein ligase complex that mediates the ubiquitination of target proteins, such as NPTXR, leading most often to their proteasomal degradation (By similarity). Responsible for degradative ubiquitination of the WNK kinases WNK1, WNK3 and WNK4. Plays a role in the reorganization of the actin cytoskeleton. Promotes growth of cell projections in oligodendrocyte precursors.[UniProtKB/Swiss-Prot Function]

Product images:



Coomassie blue staining of purified KLHL2 protein (Cat# [TP305347]). The protein was produced from HEK293T cells transfected with KLHL2 cDNA clone (Cat# [RC205347]) using MegaTran 2.0 (Cat# [TT210002]).