

Product datasheet for **TP305347**

KLHL2 (NM_007246) Human Recombinant Protein

Product data:

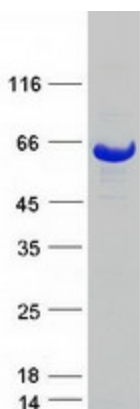
Product Type:	Recombinant Proteins
Description:	Recombinant protein of human kelch-like 2, Mayven (Drosophila) (KLHL2), 20 µg
Species:	Human
Expression Host:	HEK293T
Expression cDNA Clone or AA Sequence:	>RC205347 protein sequence Red =Cloning site Green =Tags(s)
	<p>METPPLPACTKQGHQKPLDSKDDNTEKHCPVTVNPWHMCKAFKVMNELRSQNLCDVTIVAEDMEISAH RVLAACSPYFHAMFTGEMSESRAKRVRIKEVDGWTLRMLIDYVYTAEIQVTEENVQVLLPAAGLLQLQD VKKTCCEFLESQ LHPVNCLGIRAFADMHACTDLLNKANTYAEQHFADVVLSEEFNLGIEQVCSLISSDK LTISSEKVF EAVIAWVNHDKDVRQEFMARLMEHVRLPLLPREYLVQRVEEALVKNSSACKDYLIAMK YHLLPTEQRILMKSVRTRLRTPMNLPKLMVVVGGQAPKAIRSV ECVDFKEERWHQVAELPSRRCRAGM VY MAGLVFAVGGFNGSLRVRTVDSYDPVKDQWTSVANMRDRRSTLGAAVLNGLLYAVGGFDGSTGLSSVEAY NIKSNEWFHVAPMNTRRSSVGVVGGLLYAVGGYDVASRQCLSTVECYNATTNEWTYIAEMSTRRSGAG VGVLNNLLYAVGGHDGPLVRKSVEVYDPTTNAWRQVADMMCMRRNAGVCAVNGLLYVVGDDGSCNLASV EYYPPTTDKWTWSSCMSTGRSYAGVTVIDKRL</p> <p>TRTRPLEQKLISEEDLAANDILDYKDDDDKV</p>
Tag:	C-Myc/DDK
Predicted MW:	65.8 kDa
Concentration:	>0.05 µg/µL as determined by microplate BCA method
Purity:	> 80% as determined by SDS-PAGE and Coomassie blue staining
Buffer:	25 mM Tris-HCl, 100 mM glycine, pH 7.3, 10% glycerol
Preparation:	Recombinant protein was captured through anti-DDK affinity column followed by conventional chromatography steps.
Note:	For testing in cell culture applications, please filter before use. Note that you may experience some loss of protein during the filtration process.
Storage:	Store at -80°C.



[View online »](#)

Stability:	Stable for 12 months from the date of receipt of the product under proper storage and handling conditions. Avoid repeated freeze-thaw cycles.
RefSeq:	NP_009177
Locus ID:	11275
UniProt ID:	O95198
RefSeq Size:	3137
Cytogenetics:	4q32.3
RefSeq ORF:	1779
Synonyms:	ABP-KELCH; MAV; MAYVEN
Summary:	Component of a cullin-RING-based BCR (BTB-CUL3-RBX1) E3 ubiquitin-protein ligase complex that mediates the ubiquitination of target proteins, such as NPTXR, leading most often to their proteasomal degradation (By similarity). Responsible for degradative ubiquitination of the WNK kinases WNK1, WNK3 and WNK4. Plays a role in the reorganization of the actin cytoskeleton. Promotes growth of cell projections in oligodendrocyte precursors.[UniProtKB/Swiss-Prot Function]

Product images:



Coomassie blue staining of purified KLHL2 protein (Cat# TP305347). The protein was produced from HEK293T cells transfected with KLHL2 cDNA clone (Cat# [RC205347]) using MegaTran 2.0 (Cat# [TT210002]).