

## Product datasheet for **TP305310L**

### SLC30A3 (NM\_003459) Human Recombinant Protein

#### Product data:

Product Type:	Recombinant Proteins
Description:	Recombinant protein of human solute carrier family 30 (zinc transporter), member 3 (SLC30A3), 1 mg
Species:	Human
Expression Host:	HEK293T
Expression cDNA Clone or AA Sequence:	>RC205310 protein sequence <b>Red</b> =Cloning site <b>Green</b> =Tags(s)

MEPSAAGGLETTRLVSPDRGGAGGSLRLKSLFTEPSEPLPEESKPVEMPFHHCHRDPLPPPGLTPERL  
HARRQLYAACAFCVFMAGEVVGGLAHLAIMTDAHLLADVGSMMGSLFSLWLSTRPATRTMTFGWHR  
SETLGALASVSLWMVTGILLYLAFVRLHSDYHIEGGAMLLTASIAVCANLLMAFVLHQAGPPHSHGSR  
GAEYAPLEEGPEEPLPLGNTSVRAAFVHVLGDLLQSFGLAASILIYFKPQYKAADPISTFLFSICALGS  
TAPTLRDVLRILMEGTPRNVGFEPVRDTLLSVPGVRATHELHLWALTLYHVASAHLAIDSTADPEAVLA  
EASSRLYSRFGFSSCTLQVEQYQPEMAQCLRCQEPQQA

**TRTRPLEQKLISEEDLAANDILDYKDDDDKV**

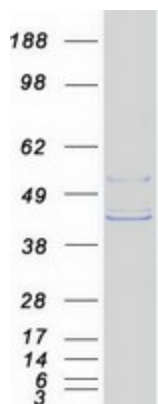
Tag:	C-Myc/DDK
Predicted MW:	41.8 kDa
Concentration:	>0.05 µg/µL as determined by microplate BCA method
Purity:	> 80% as determined by SDS-PAGE and Coomassie blue staining
Buffer:	25 mM Tris-HCl, 100 mM glycine, pH 7.3, 10% glycerol
Preparation:	Recombinant protein was captured through anti-DDK affinity column followed by conventional chromatography steps.
Note:	For testing in cell culture applications, please filter before use. Note that you may experience some loss of protein during the filtration process.
Storage:	Store at -80°C.
Stability:	Stable for 12 months from the date of receipt of the product under proper storage and handling conditions. Avoid repeated freeze-thaw cycles.
RefSeq:	<u><a href="#">NP_003450</a></u>



[View online »](#)

Locus ID:	7781
UniProt ID:	<a href="#">Q99726</a>
RefSeq Size:	2108
Cytogenetics:	2p23.3
RefSeq ORF:	1164
Synonyms:	ZNT3
Summary:	Involved in accumulation of zinc in synaptic vesicles.[UniProtKB/Swiss-Prot Function]
Protein Families:	Secreted Protein, Transmembrane

### Product images:



Coomassie blue staining of purified SLC30A3 protein (Cat# [TP305310]). The protein was produced from HEK293T cells transfected with SLC30A3 cDNA clone (Cat# [RC205310]) using MegaTran 2.0 (Cat# [TT210002]).