

Product datasheet for **TP305300M**

EPS8 (NM_004447) Human Recombinant Protein

Product data:

Product Type:	Recombinant Proteins
Description:	Recombinant protein of human epidermal growth factor receptor pathway substrate 8 (EPS8), 100 µg
Species:	Human
Expression Host:	HEK293T
Expression cDNA Clone or AA Sequence:	>RC205300 protein sequence Red =Cloning site Green =Tags(s)

MNGHISNHPSSFGMYP SQMNGYGSSPTFSQTDREHGSKTSAKALYEQRK NYARDSVSSVSDISQYRVEHL
TTFVLDRKDAMITVDDGIRKLKLLDAKGK VWTQDMILQVDDRAVSLIDLESKNELENFPLNTIQHCQAVM
HSCSYDSVLALVCKEPTQNKPD LHLFQCDEVKANLISEDIESAISDSKGGKQRRPDALRMISNADPSIP
PPPRAPAPAPP GTVTQVDVRSRVAAWSAWAADQGD FEKPRQYHEQEETPEMMAARIDRDVQILNHILDDI
EFFITKLQKAAEAFSELSKRKKNKKGKRKGP GEGVLT LRAKPPPDEF LDCFQKFKHGFNLLAKLKSHIQ
NPSAADLVHFLFTPLNMVQATGGPELASSVLSPLL NKDTIDFLNYTVNGDERQLWMSLGGTWMKARAEW
PKEQFIPPYVPRFRNGWEPPMLNFMGATMEQDLYQLAESVANVAEHQRKQEIKRLSTEHSSVSEYHPADG
YAFSSNIYTRGSHLDQGEAAVAFKPTSNRHIDRNYEPLKTQPKKYAKSKYDFVARNNSELSVLKDDILEI
LDDRKQWWKVRNASGDSGFV PNNILDIVRPPE SGLGRADPPYHTIQKQRMEYGPRPADTPPAPSPPTP
VPVPVPLPPSTPAPVPVSKVPANITRQNSSSSDSGG SIVRDSQRHKQLPVDRRKSQMEEVQDELIHRLTI
GRSAAQKKFHVPRQNVPVINYDSTPEDVKTWLQSKGFNPVTVNSLGV LNGAQLFSLNKDELRTVCPEG
ARVYSQITVQKAALEDSSGSSELQEIMRRRQEKISAAAASDSGVESFDEGSSH

TRTRPLEQKLISEEDLAANDILDYKDDDDKV

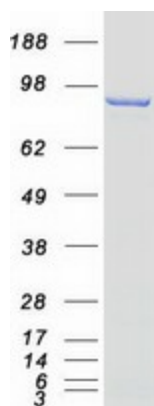
Tag:	C-Myc/DDK
Predicted MW:	91.7 kDa
Concentration:	>0.05 µg/µL as determined by microplate BCA method
Purity:	> 80% as determined by SDS-PAGE and Coomassie blue staining
Buffer:	25 mM Tris-HCl, 100 mM glycine, pH 7.3, 10% glycerol
Preparation:	Recombinant protein was captured through anti-DDK affinity column followed by conventional chromatography steps.



[View online »](#)

Note:	For testing in cell culture applications, please filter before use. Note that you may experience some loss of protein during the filtration process.
Storage:	Store at -80°C.
Stability:	Stable for 12 months from the date of receipt of the product under proper storage and handling conditions. Avoid repeated freeze-thaw cycles.
RefSeq:	NP_004438
Locus ID:	2059
UniProt ID:	Q12929 , B4E3T6
RefSeq Size:	4088
Cytogenetics:	12p12.3
RefSeq ORF:	2466
Synonyms:	DFNB102
Summary:	This gene encodes a member of the EPS8 family. This protein contains one PH domain and one SH3 domain. It functions as part of the EGFR pathway, though its exact role has not been determined. Highly similar proteins in other organisms are involved in the transduction of signals from Ras to Rac and growth factor-mediated actin remodeling. Alternate transcriptional splice variants of this gene have been observed but have not been thoroughly characterized. [provided by RefSeq, Jul 2008]
Protein Families:	Druggable Genome

Product images:



Coomassie blue staining of purified EPS8 protein (Cat# [TP305300]). The protein was produced from HEK293T cells transfected with EPS8 cDNA clone (Cat# [RC205300]) using MegaTran 2.0 (Cat# [TT210002]).