

## Product datasheet for **TP305300L**

### EPS8 (NM\_004447) Human Recombinant Protein

#### Product data:

Product Type:	Recombinant Proteins
Description:	Recombinant protein of human epidermal growth factor receptor pathway substrate 8 (EPS8), 1 mg
Species:	Human
Expression Host:	HEK293T
Expression cDNA Clone or AA Sequence:	>RC205300 protein sequence <b>Red</b> =Cloning site <b>Green</b> =Tags(s)

MNGHISNHPSSFGMYP SQMNGYGSSPTFSQTDREHGSKTSAKALYEQRK NYARDSVSSVSDISQYRVEHL  
TTFVLD RKDAMITVDDGIRKLKLLDAKGK VWTQDMILQVDDRAVSLIDLESKNELENFPLNTIQHCQAVM  
HSCSYDSVLALVCKEPTQNKPD LHLFQCDEVKANLISEDIESAISDSKGGKQKRRPDALRMISNADPSIP  
PPPRAPAPAPP GTVTQVDVRSRVAAWSAWAADQGD FEKPRQYHEQEETPEMMAARIDRDVQILNHILDDI  
EFFITKLQKAAEAFSELSKRKKNKKGKRKGPGEGLTLRAKPPPDEF LDCFQKFKHGFNLLAKLKSHIQ  
NPSAADLVHFLFTPLNMVQATGGPELASSVLSPLL NKDTIDFLNYTVNGDERQLWMSLGGTWMKARAEW  
PKEQFIPPYVPRFRNGWEPPMLNFMGATMEQDLYQLAESVANVAEHQRKQEIKRLSTEHSSVSEYHPADG  
YAFSSNIYTRGSHLDQGEAAVAFKPTSNRHIDRNYEPLKTQPKKYAKSKYDFVARNNSELSVLKDDILEI  
LDDRKQWWKVRNASGDSGFV PNNILDIVRPPEGLGRADPPYTHTIQKQRMEYGPRPADTPPAPSPPTP  
VPVPVPLPPSTPAPVPVSKVPANITRQNSSSSDSGG SIVRDSQRHKQLPVD RRRKSQMEEVQDEL IHR LTI  
GRSAAQKKFHVPRQNVPV INITYDSTPEDVKTWLQSKGFNPVTVNSLGV LNGAQLFSLNKDELRTVCPEG  
ARVYSQITVQKAALEDSSGSSELQEIMRRRQEKISAAAASDSGVESFDEGSSH

**TRTRPLEQKLISEEDLAANDILDYKDDDDKV**

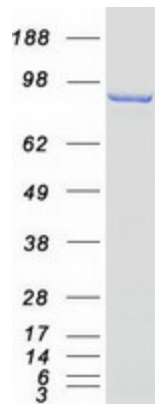
Tag:	C-Myc/DDK
Predicted MW:	91.7 kDa
Concentration:	>0.05 µg/µL as determined by microplate BCA method
Purity:	> 80% as determined by SDS-PAGE and Coomassie blue staining
Buffer:	25 mM Tris-HCl, 100 mM glycine, pH 7.3, 10% glycerol
Preparation:	Recombinant protein was captured through anti-DDK affinity column followed by conventional chromatography steps.



[View online »](#)

<b>Note:</b>	For testing in cell culture applications, please filter before use. Note that you may experience some loss of protein during the filtration process.
<b>Storage:</b>	Store at -80°C.
<b>Stability:</b>	Stable for 12 months from the date of receipt of the product under proper storage and handling conditions. Avoid repeated freeze-thaw cycles.
<b>RefSeq:</b>	<a href="#">NP_004438</a>
<b>Locus ID:</b>	2059
<b>UniProt ID:</b>	<a href="#">Q12929</a> , <a href="#">B4E3T6</a>
<b>RefSeq Size:</b>	4088
<b>Cytogenetics:</b>	12p12.3
<b>RefSeq ORF:</b>	2466
<b>Synonyms:</b>	DFNB102
<b>Summary:</b>	This gene encodes a member of the EPS8 family. This protein contains one PH domain and one SH3 domain. It functions as part of the EGFR pathway, though its exact role has not been determined. Highly similar proteins in other organisms are involved in the transduction of signals from Ras to Rac and growth factor-mediated actin remodeling. Alternate transcriptional splice variants of this gene have been observed but have not been thoroughly characterized. [provided by RefSeq, Jul 2008]
<b>Protein Families:</b>	Druggable Genome

### Product images:



Coomassie blue staining of purified EPS8 protein (Cat# [TP305300]). The protein was produced from HEK293T cells transfected with EPS8 cDNA clone (Cat# [RC205300]) using MegaTran 2.0 (Cat# [TT210002]).