

Product datasheet for **TP305286**

GEM (NM_181702) Human Recombinant Protein

Product data:

Product Type:	Recombinant Proteins
Description:	Recombinant protein of human GTP binding protein overexpressed in skeletal muscle (GEM), transcript variant 2, 20 µg
Species:	Human
Expression Host:	HEK293T
Expression cDNA Clone or AA Sequence:	>RC205286 protein sequence Red =Cloning site Green =Tags(s) MTLNNVTMRQGTVMQPQQQRWSIPADGRHLMVQKEPHQYSHRNRHSATPEDHCRRSWSSDSTDSVISSE SGNTYYRVVLIGEQQGVGKSTLANIFAGVHDSMDSCEVLGEDTYERTLMVDGESATIILLDMWENKGENE WLHDHCMQVGDAYLIVYSITDRASFEEKASELRRLRRARQTEDIPIILVGNKSDLVRCREVSVSEGRACA VVFDFKIETSAAVQHNVKELFEGIVRQVRLRRDSKEKNERRLAYQKRKESMPRKARRFWGKIVAKNNKN MAFKLKSCHDLSVL TRTRPLEQKLISEEDLAANDILDYKDDDDKV
Tag:	C-Myc/DDK
Predicted MW:	33.8 kDa
Concentration:	>0.05 µg/µL as determined by microplate BCA method
Purity:	> 80% as determined by SDS-PAGE and Coomassie blue staining
Buffer:	25 mM Tris-HCl, 100 mM glycine, pH 7.3, 10% glycerol
Preparation:	Recombinant protein was captured through anti-DDK affinity column followed by conventional chromatography steps.
Note:	For testing in cell culture applications, please filter before use. Note that you may experience some loss of protein during the filtration process.
Storage:	Store at -80°C.
Stability:	Stable for 12 months from the date of receipt of the product under proper storage and handling conditions. Avoid repeated freeze-thaw cycles.
RefSeq:	NP_859053
Locus ID:	2669



[View online »](#)

UniProt ID: [P55040](#), [A0A024R9F5](#)

RefSeq Size: 2080

Cytogenetics: 8q22.1

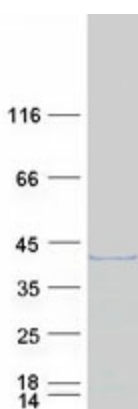
RefSeq ORF: 888

Synonyms: KIR

Summary: The protein encoded by this gene belongs to the RAD/GEM family of GTP-binding proteins. It is associated with the inner face of the plasma membrane and could play a role as a regulatory protein in receptor-mediated signal transduction. Alternative splicing occurs at this locus and two transcript variants encoding the same protein have been identified. [provided by RefSeq, Jul 2008]

Protein Families: Druggable Genome

Product images:



Coomassie blue staining of purified GEM protein (Cat# TP305286). The protein was produced from HEK293T cells transfected with GEM cDNA clone (Cat# [RC205286]) using MegaTran 2.0 (Cat# [TT210002]).