

## Product datasheet for **TP305279M**

### LANCL1 (NM\_006055) Human Recombinant Protein

#### Product data:

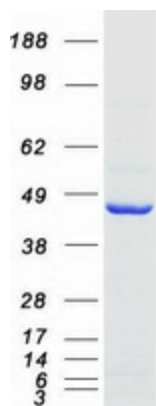
Product Type:	Recombinant Proteins
Description:	Recombinant protein of human LanC lantibiotic synthetase component C-like 1 (bacterial) (LANCL1), transcript variant 1, 100 µg
Species:	Human
Expression Host:	HEK293T
Expression cDNA Clone or AA Sequence:	>RC205279 protein sequence <b>Red</b> =Cloning site <b>Green</b> =Tags(s)
	<p>MAQRAFPNPYADYNKSLAEGYFDAAGRLTPEFSQRLTNKIRELLQQMERGLKSADPRDGTGYTGWAGIAV LYLHLYDVFQDPAYLQLAHGYVKQSLNCLTKRSITFLCGDAGPLAVAAVLYHKMNNEKQAEDCITRLIHL NKIDPHAPNEMLYGRIGYIYALLFVNKNFGVEKIPQSHIQQICETILTSGENLARKRNFTAKSPLMYEWY QEYVVGAAHGLAGIYYYYLMQPSLQVSQGLHSLVKPSVDYVCQLKFPNGNYPPCIGDNRDLLVHWCHGAP GVIYMLIQAYKVFREEKYLCDAYQCADVIWQYGLLKKGYGLCHGSAGNAYAFLTYNLTQDMKYLYRACK FAEWCLEYGEHGCRTPDTPFSLFEGMAGTIYFLADLLVPTKARFPAPFL</p> <p><b>TRTRPLEQKLISEEDLAANDILDYKDDDDKV</b></p>
Tag:	C-Myc/DDK
Predicted MW:	45.1 kDa
Concentration:	>0.05 µg/µL as determined by microplate BCA method
Purity:	> 80% as determined by SDS-PAGE and Coomassie blue staining
Buffer:	25 mM Tris-HCl, 100 mM glycine, pH 7.3, 10% glycerol
Preparation:	Recombinant protein was captured through anti-DDK affinity column followed by conventional chromatography steps.
Note:	For testing in cell culture applications, please filter before use. Note that you may experience some loss of protein during the filtration process.
Storage:	Store at -80°C.
Stability:	Stable for 12 months from the date of receipt of the product under proper storage and handling conditions. Avoid repeated freeze-thaw cycles.
RefSeq:	<u><a href="#">NP_006046</a></u>



[View online »](#)

Locus ID:	10314
UniProt ID:	<a href="#">Q43813</a> , <a href="#">Q53TN2</a>
RefSeq Size:	4620
Cytogenetics:	2q34
RefSeq ORF:	1197
Synonyms:	GPR69A; p40
Summary:	This gene encodes a loosely associated peripheral membrane protein related to the LanC family of bacterial membrane-associated proteins involved in the biosynthesis of antimicrobial peptides. This protein may play a role as a peptide-modifying enzyme component in eukaryotic cells. Previously considered a member of the G-protein-coupled receptor superfamily, this protein is now in the LanC family. Multiple alternatively spliced variants, encoding the same protein, have been identified. [provided by RefSeq, Nov 2008]
Protein Families:	Druggable Genome

### Product images:



Coomassie blue staining of purified LANCL1 protein (Cat# [TP305279]). The protein was produced from HEK293T cells transfected with LANCL1 cDNA clone (Cat# [RC205279]) using MegaTran 2.0 (Cat# [TT210002]).