

## Product datasheet for TP305275

### SPAG6 (NM\_172242) Human Recombinant Protein

#### Product data:

Product Type:	Recombinant Proteins
Description:	Recombinant protein of human sperm associated antigen 6 (SPAG6), transcript variant 2, 20 µg
Species:	Human
Expression Host:	HEK293T
Expression cDNA Clone or AA Sequence:	>RC205275 protein sequence <span style="color: red;">Red</span> =Cloning site <span style="color: green;">Green</span> =Tags(s)  MSQRQVLQVFEQYQKARTQFVQMVAELATRPQNIETLQNAGVMSLLRLLLLDVPTIQQIAALALGRLAN YNDDLAEAVWKCDILPQLVYSLAEQNRFYKAAAFVLRVAVGKHSPQLAQAVDCGALDTLVICLED FDPG VKEAAAWALRYIARHNAELSQA VVDAGAVPLLVLICIQEPEIALKGIAASALSDIVKHSPELAQT VVDAGA VAHLAQMILNPDAKLKHQILSALSQVSKHSVDLAEMVVEAEIFPVVLTCLKDKDEYVKKNA STLIREIAK HTPELSQLV NAGGVA AVIDCIGSCKGNTRLPGIMMLGYVAAHSENLAMAVIISKGVPQLSVCLSEEPED HIKAAA AWALGQIGRHTPEHARAVAVTNTLPVLLSLYMSTESSED LQVKS KKA IKNILQKCTYLPAL EPF LYDAPPN ILKHVVGQFSKVLFPWIFRYTSAEGGQLSTT  <span style="color: red;">TR</span> <span style="color: green;">TRPLEQKLISEEDLAANDILDYKDDDDKV</span>
Tag:	C-Myc/DDK
Predicted MW:	49.5 kDa
Concentration:	>0.05 µg/µL as determined by microplate BCA method
Purity:	> 80% as determined by SDS-PAGE and Coomassie blue staining
Buffer:	25 mM Tris-HCl, 100 mM glycine, pH 7.3, 10% glycerol
Preparation:	Recombinant protein was captured through anti-DDK affinity column followed by conventional chromatography steps.
Note:	For testing in cell culture applications, please filter before use. Note that you may experience some loss of protein during the filtration process.
Storage:	Store at -80°C.
Stability:	Stable for 12 months from the date of receipt of the product under proper storage and handling conditions. Avoid repeated freeze-thaw cycles.


[View online »](#)

RefSeq: NP\_758442

Locus ID: 9576

UniProt ID: O75602

RefSeq Size: 2488

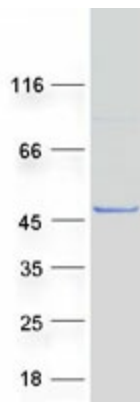
Cytogenetics: 10p12.2

RefSeq ORF: 1374

Synonyms: CFAP194; CT141; FAP194; pf16; Repro-SA-1

**Summary:** The correlation of anti-sperm antibodies with cases of unexplained infertility implicates a role for these antibodies in blocking fertilization. Improved diagnosis and treatment of immunologic infertility, as well as identification of proteins for targeted contraception, are dependent on the identification and characterization of relevant sperm antigens. The protein expressed by this gene is recognized by anti-sperm antibodies from an infertile man. This protein localizes to the tail of permeabilized human sperm and contains eight contiguous armadillo repeats, a motif known to mediate protein-protein interactions. Studies in mice suggest that this protein is involved in sperm flagellar motility and maintenance of the structural integrity of mature sperm. Several transcript variants encoding different isoforms have been found for this gene. [provided by RefSeq, Dec 2011]

## Product images:



Coomassie blue staining of purified SPAG6 protein (Cat# TP305275). The protein was produced from HEK293T cells transfected with SPAG6 cDNA clone (Cat# [RC205275]) using MegaTran 2.0 (Cat# [TT210002]).