

## Product datasheet for **TP305274L**

### INSIG2 (NM\_016133) Human Recombinant Protein

#### Product data:

Product Type:	Recombinant Proteins
Description:	Recombinant protein of human insulin induced gene 2 (INSIG2), 1 mg
Species:	Human
Expression Host:	HEK293T
Expression cDNA Clone or AA Sequence:	>RC205274 protein sequence <b>Red</b> =Cloning site <b>Green</b> =Tags(s)
	 MAEGETESPGPKKCGPYISSVTSQSVNLMIRGVVLFVIGVFLALVLNLLQIQRNVTLFPPDVIASIFSSA WWVPPCCGTASAVIGLLYPCIDRHLGEPHKFKREWSSVMRCVAVFVGINHASAKVDFDNNIQLSLTLAAL SIGLWWTFDRSRSGFGLGVGIAFLATVVTQLLVYNGVYQYTSPDFLYVRSWLPCIFFAGGITMGNIGRQL AMYECKVIAEKSHQE  <b>TRTRPLEQKLISEEDLAANDILDYKDDDDKV</b>
Tag:	C-Myc/DDK
Predicted MW:	24.6 kDa
Concentration:	>0.05 µg/µL as determined by microplate BCA method
Purity:	> 80% as determined by SDS-PAGE and Coomassie blue staining
Buffer:	25 mM Tris-HCl, 100 mM glycine, pH 7.3, 10% glycerol
Preparation:	Recombinant protein was captured through anti-DDK affinity column followed by conventional chromatography steps.
Note:	For testing in cell culture applications, please filter before use. Note that you may experience some loss of protein during the filtration process.
Storage:	Store at -80°C.
Stability:	Stable for 12 months from the date of receipt of the product under proper storage and handling conditions. Avoid repeated freeze-thaw cycles.
RefSeq:	<a href="#">NP_057217</a>
Locus ID:	51141
UniProt ID:	<a href="#">Q9Y5U4</a> , <a href="#">A0A024RAI2</a>



[View online »](#)

RefSeq Size: 2592

Cytogenetics: 2q14.1-q14.2

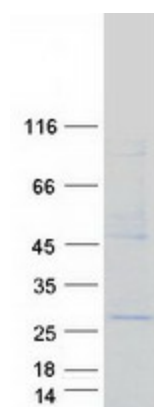
RefSeq ORF: 675

Synonyms: INSIG-2

**Summary:** The protein encoded by this gene is highly similar to the protein product encoded by gene INSIG1. Both INSIG1 protein and this protein are endoplasmic reticulum proteins that block the processing of sterol regulatory element binding proteins (SREBPs) by binding to SREBP cleavage-activating protein (SCAP), and thus prevent SCAP from escorting SREBPs to the Golgi. [provided by RefSeq, Jul 2008]

**Protein Families:** Transmembrane

### Product images:



Coomassie blue staining of purified INSIG2 protein (Cat# [TP305274]). The protein was produced from HEK293T cells transfected with INSIG2 cDNA clone (Cat# [RC205274]) using MegaTran 2.0 (Cat# [TT210002]).