

## Product datasheet for TP305270

### SEC23 (SEC23A) (NM\_006364) Human Recombinant Protein

#### Product data:

Product Type:	Recombinant Proteins
Description:	Recombinant protein of human Sec23 homolog A ( <i>S. cerevisiae</i> ) (SEC23A), 20 µg
Species:	Human
Expression Host:	HEK293T
Expression cDNA Clone or AA Sequence:	>RC205270 protein sequence Red=Cloning site Green=Tags(s)

MTTYLEFIQQNEERDGVRFSWNVWPSSRLEATRMVVPVAALFTPLKERPDLPPIQYEPVLCsRTTCRAVL  
NPLCQVDYRAKLWACNFCYQRNQFPSPYAGISELNQPAELLPQFSSIEYVLRGPMPLIFLYVVDTCME  
DEDLQALKESMQMSLSLLPPTALVGLITFGRMVQVHELGCESKSYVFRGTDLSAKQLQEMGLSKVP  
VTQATRGPVQPPPSNRFLQPVQKIDMNLTDLLGELQRDPWPVPQGRPLRSSGVALSIAVGLLECTFP  
NTGARIMMFIGGPATQGGPMVVGDELKTPIRSWHDIDKDNAYVKKGKTKHFEALANRAATTGHVIDIYAC  
ALDQTGLLEMKCCPNLTGGYMVMGDSFNLSLFKQTFQRVFTKDMHGQFKMGFGGTLEIKTSREIKISGAI  
GPCVSLNSKGPCVSENEIGTGGTCQWKICGLSPTTTLAIYFEVNVQHNAPIPQGGRGAIQFVTQYQHSSG  
QRRIRVTIARNWADAQTQIQNIAASFDQEAAILMARLAIYRAETEEGPDVLRWLDRQLRLCQKFGHEY  
HKDDPSSFRFSETFSLYPQFMFHLRRSSFLQVFNNSPDESSYRHHFMRQDLTQSLIMIPIYAYSFSG  
PPEPVLLDSSSILADRILLMDTFFQILYHGETIAQWRKSGYQDMPEYENFRHLLQAPVDDAQEILHSRF  
PMPRYIDTEHGGSQARFLLSKVNPSQTHNNMYAWGQESGAPILTDDVSLQVFMHLLKLAIVSSAA

TRTRPLEQKLISEEDLAANDILDYKDDDDKV

Tag:	C-Myc/DDK
Predicted MW:	86 kDa
Concentration:	>0.05 µg/µL as determined by microplate BCA method
Purity:	> 80% as determined by SDS-PAGE and Coomassie blue staining
Buffer:	25 mM Tris-HCl, 100 mM glycine, pH 7.3, 10% glycerol
Preparation:	Recombinant protein was captured through anti-DDK affinity column followed by conventional chromatography steps.
Note:	For testing in cell culture applications, please filter before use. Note that you may experience some loss of protein during the filtration process.
Storage:	Store at -80°C.



[View online »](#)

**Stability:** Stable for 12 months from the date of receipt of the product under proper storage and handling conditions. Avoid repeated freeze-thaw cycles.

**RefSeq:** [NP\\_006355](#)

**Locus ID:** 10484

**UniProt ID:** [Q15436](#)

**RefSeq Size:** 3890

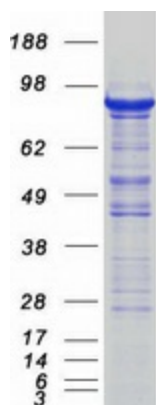
**Cytogenetics:** 14q21.1

**RefSeq ORF:** 2295

**Synonyms:** CLSD; hSec23A

**Summary:** The protein encoded by this gene is a member of the SEC23 subfamily of the SEC23/SEC24 family. It is part of a protein complex and found in the ribosome-free transitional face of the endoplasmic reticulum (ER) and associated vesicles. This protein has similarity to yeast Sec23p component of COPII. COPII is the coat protein complex responsible for vesicle budding from the ER. The encoded protein is suggested to play a role in the ER-Golgi protein trafficking. [provided by RefSeq, Jul 2008]

### Product images:



Coomassie blue staining of purified SEC23A protein (Cat# TP305270). The protein was produced from HEK293T cells transfected with SEC23A cDNA clone (Cat# [RC205270]) using MegaTran 2.0 (Cat# [TT210002]).