

Product datasheet for **TP305263L**

Protein phosphatase inhibitor 1 (PPP1R1A) (NM_006741) Human Recombinant Protein

Product data:

Product Type:	Recombinant Proteins
Description:	Recombinant protein of human protein phosphatase 1, regulatory (inhibitor) subunit 1A (PPP1R1A), 1 mg
Species:	Human
Expression Host:	HEK293T
Expression cDNA Clone or AA Sequence:	>RC205263 protein sequence Red =Cloning site Green =Tags(s)
	MEQDNSPQKIQFTVPLLEPHLDPEAAEQIRRRRPTPATLVLTSDQSSPEIDEDRIPNPHLKSTLAMSPRQ RKKMTRITPTMKELQMMVEHHLGQQQQGEEPEGAESTGTQESRPPGIPDTEVESRLGTSGTAKKTAECI PKTHERGSKEPSTKEPSTHIPPLDSKGANSV
	TRTRPLEQKLISEEDLAANDILDYKDDDDKV
Tag:	C-Myc/DDK
Predicted MW:	18.8 kDa
Concentration:	>0.05 µg/µL as determined by microplate BCA method
Purity:	> 80% as determined by SDS-PAGE and Coomassie blue staining
Buffer:	25 mM Tris-HCl, 100 mM glycine, pH 7.3, 10% glycerol
Preparation:	Recombinant protein was captured through anti-DDK affinity column followed by conventional chromatography steps.
Note:	For testing in cell culture applications, please filter before use. Note that you may experience some loss of protein during the filtration process.
Storage:	Store at -80°C.
Stability:	Stable for 12 months from the date of receipt of the product under proper storage and handling conditions. Avoid repeated freeze-thaw cycles.
RefSeq:	NP_006732
Locus ID:	5502
UniProt ID:	Q13522



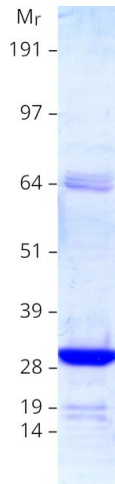
[View online »](#)

RefSeq Size: 1849
 Cytogenetics: 12q13.2
 RefSeq ORF: 513
 Synonyms: I1; IPP1

Summary: Inhibitor of protein-phosphatase 1. This protein may be important in hormonal control of glycogen metabolism. Hormones that elevate intracellular cAMP increase I-1 activity in many tissues. I-1 activation may impose cAMP control over proteins that are not directly phosphorylated by PKA. Following a rise in intracellular calcium, I-1 is inactivated by calcineurin (or PP2B). Does not inhibit type-2 phosphatases.[UniProtKB/Swiss-Prot Function]

Protein Families: Druggable Genome
Protein Pathways: Long-term potentiation

Product images:



Coomassie blue staining of purified PPP1R1A protein (Cat# [TP305263]). The protein was produced from HEK293T cells transfected with PPP1R1A cDNA clone (Cat# [RC205263]) using MegaTran 2.0 (Cat# [TT210002]).