

## Product datasheet for **TP305261**

### **RAB40B (NM\_006822) Human Recombinant Protein**

#### **Product data:**

Product Type:	Recombinant Proteins
Description:	Recombinant protein of human RAB40B, member RAS oncogene family (RAB40B), 20 µg
Species:	Human
Expression Host:	HEK293T
Expression cDNA Clone or AA Sequence:	>RC205261 protein sequence <b>Red</b> =Cloning site <b>Green</b> =Tags(s)

MSALGSPVRAYDFLLKFLLVGSDVVGKGEILASLQDGAAESTYGHPAGIDYKTTTILLDGRRVKLQLWDT  
SGQGRFCTIFRSYSRGAQGVILVYDIANRWSFDGIDRWIKEIDEHAPGVPKILVGNRLHLAFKRQVPTEQ  
AQAYAERLGVTFEVSPLCNFNITESFTELARIVLLRHGMDRLWRPSKVLSQLDLCCRAVVSCTPVHLVD  
KLPLPIALRSHLKSFSMANGLNARMMHGGSYSLTTSSTHKRSSLRKVLRPPQSPPKNCTRNSCKIS

**TRTRPLEQKLISEEDLAANDILDYKDDDDKV**

Tag:	C-Myc/DDK
Predicted MW:	30.8 kDa
Concentration:	>0.05 µg/µL as determined by microplate BCA method
Purity:	> 80% as determined by SDS-PAGE and Coomassie blue staining
Buffer:	25 mM Tris-HCl, 100 mM glycine, pH 7.3, 10% glycerol
Preparation:	Recombinant protein was captured through anti-DDK affinity column followed by conventional chromatography steps.
Note:	For testing in cell culture applications, please filter before use. Note that you may experience some loss of protein during the filtration process.
Storage:	Store at -80°C.
Stability:	Stable for 12 months from the date of receipt of the product under proper storage and handling conditions. Avoid repeated freeze-thaw cycles.
RefSeq:	<a href="#">NP_006813</a>
Locus ID:	10966
UniProt ID:	<a href="#">Q12829</a>



[View online »](#)

RefSeq Size: 1776

Cytogenetics: 17q25.3

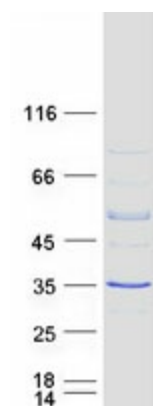
RefSeq ORF: 834

Synonyms: RAR; SEC4L

Summary: The protein encoded by this gene has similarity to a yeast protein which suggests a role of the gene product in regulating secretory vesicles. [provided by RefSeq, Jul 2008]

Protein Families: Druggable Genome

### Product images:



Coomassie blue staining of purified RAB40B protein (Cat# TP305261). The protein was produced from HEK293T cells transfected with RAB40B cDNA clone (Cat# [RC205261]) using MegaTran 2.0 (Cat# [TT210002]).