

## Product datasheet for **TP305258M**

### CRHBP (NM\_001882) Human Recombinant Protein

#### Product data:

Product Type:	Recombinant Proteins
Description:	Recombinant protein of human corticotropin releasing hormone binding protein (CRHBP), 100 µg
Species:	Human
Expression Host:	HEK293T
Expression cDNA Clone or AA Sequence:	>RC205258 representing NM_001882 <b>Red</b> =Cloning site <b>Green</b> =Tags(s)

MSPNFKLQCHFILIFLTALRGESRYLELREAADYDPFLLSANLKRELAGEQPYRRALRCLDMLSLQGQF  
TFTADRPQLHCAAFFISEPEEFITIHVDQVSIDCQGGDFLKVFDGWILKGEKFPSSQDHPLPSAERYIDF  
CESGLSRRSIRSSQNVAMIFFRVHEPGNGFTLTIKTDPNLFCNVISQTPNGKFTLVVPHQHRNCSFSII  
YPWIKISDLTLGHVNGLQLKKSSAGCEGIGDFVELLGGTGLDPSKMTPLADLCYPFHGPAQMKGVCNDT  
VVRMVSSGKHVNRVTFEYRQLEPYELENPNGNSIGEFCLSL

**TR**TRPLEQKLISEEDLAANDILDYKDDDDKV

Tag:	C-Myc/DDK
Predicted MW:	36 kDa
Concentration:	>0.05 µg/µL as determined by microplate BCA method
Purity:	> 80% as determined by SDS-PAGE and Coomassie blue staining
Buffer:	25 mM Tris-HCl, 100 mM glycine, pH 7.3, 10% glycerol
Preparation:	Recombinant protein was captured through anti-DDK affinity column followed by conventional chromatography steps.
Note:	For testing in cell culture applications, please filter before use. Note that you may experience some loss of protein during the filtration process.
Storage:	Store at -80°C.
Stability:	Stable for 12 months from the date of receipt of the product under proper storage and handling conditions. Avoid repeated freeze-thaw cycles.
RefSeq:	<u><a href="#">NP_001873</a></u>
Locus ID:	1393



[View online »](#)

UniProt ID: [P24387](#)

RefSeq Size: 1854

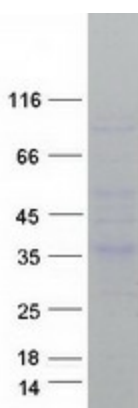
Cytogenetics: 5q13.3

RefSeq ORF: 966

Synonyms: CRF-BP; CRFBP

**Summary:** Corticotropin-releasing hormone is a potent stimulator of synthesis and secretion of preopiomelanocortin-derived peptides. Although CRH concentrations in the human peripheral circulation are normally low, they increase throughout pregnancy and fall rapidly after parturition. Maternal plasma CRH probably originates from the placenta. Human plasma contains a CRH-binding protein which inactivates CRH and which may prevent inappropriate pituitary-adrenal stimulation in pregnancy. [provided by RefSeq, Jul 2008]

### Product images:



Coomassie blue staining of purified CRHBP protein (Cat# [TP305258]). The protein was produced from HEK293T cells transfected with CRHBP cDNA clone (Cat# [RC205258]) using MegaTran 2.0 (Cat# [TT210002]).